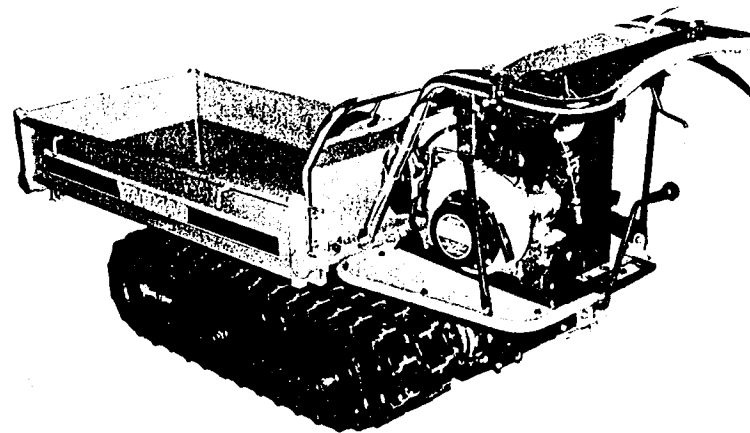


**YANMAR GASOLINE  
CARRIER  
MCG91**

PARTS CATALOG

NPC-2947



**YANMAR AGRICULTURAL EQUIPMENT CO.,LTD.**

# CONTENTS

YOUR PARTS ORDERING.....	1A02
SPECIFICATIONS.....	1A03
TABLE OF DETAILS OF SPECIFICATIONS .....	1A03

ENGINE UNIT(GA90E-SCKN) .....	1B02
GROUP NO. GROUP NAME	
1. CYLINDER BLOCK .....	1B03
2. CYLINDER HEAD & BONNET .....	1B04
3. TOOL & LABEL .....	1B05
4. AIR CLEANER & MUFFLER .....	1B06
5. CRANKSHAFT,PISTON & CAMSHAFT .....	1B07
6. FUEL OIL TANK & FUEL OIL LINE .....	1B08
7. CARBURETOR .....	1B09
8. GOVERNOR & CONTROL DEVICE .....	1B10
9. FLY.MAGNET & STARTING DEVICE .....	1B11
PULLEY & TENSION SECTION .....	1C02
1. TENSION ARM .....	1C03
2. PULLEY .....	1C04
FRAME SECTION .....	1C05
3. BODY FRAME .....	1C06
TRAVELING SECTION (1) .....	1C07
4. IDLER .....	1C08
5. TRACK ROLLER .....	1C09
CONTROL SECTION .....	1C10
6. HANDLE .....	1C11
7. TRAVEL LEVER .....	1C12
8. BRAKE LEVER .....	1C13
9. MAIN CHANGE LEVER .....	1C14
10. SIDE CLUTCH LEVER .....	1C15
14. DEADMAN LEVER(ADD. ITEM .....	1C16
PLATFORM CARRIER SECTION .....	1D01
11. PLATFORM CARRIER .....	1D02

TOOLS, ACCESSORIES & LABELS SEC .....	1D03
<b>GROUP NO.    GROUP NAME</b>	
12. LABELS .....	1D04
13. TOOLS & ACCESSORIES .....	1D05
15. LABELS(ADD. ITEM .....	1D06
TRAVELING SECTION (2) .....	1E02
1. TRANSMISSION CASE .....	1E03
2. MAIN SHAFT .....	1E04
3. TRANSMISSION SHAFT B .....	1E05
4. SIDE CLUTCH SHAFT .....	1E06
5. AXLE .....	1E07
6. BRAKE .....	1E08
7. SIDE CLUTCH .....	1E09
8. MAIN CHANGE .....	1E10
PARTS INDEX .....	1M01
FICHE INDEX .....	1M16

# YOUR PARTS ORDERING

- When placing your parts order with us, Please contact us upon confirming the Model, Part No, Description and Q'ty of the parts you want to order by this parts catalog.  
First look for the illustration of the part you want. Then you can find out the necessary informations by tracing the illustration No., as each illustration corresponds to the parts list on the following page.
- All parts the illustrations of which are not numbered shall not be sold separately.
- You are asked to prepare parts, especially consumable parts in the demand season earlier, as orders will come with a rush in this season.
- Parts other than those due to misshipping on your part shall not be allowed to returned in principle.
- Please surely use **YANMAR** Genuine Parts in any **YANMAR** Product.  
(Use of similar goods (parts) on the market causes earlier damage or worsening of performance.)

# HOW TO READ THIS PARTS CATALOG

- In the case where a Ref. No. given in the list does not agree with the corresponding Sketch No. in illustration (no suffix number as shown below), an illustration for such a New Part has been omitted only in the case of a parts change for which Interchangeability Symbol N, R or K is given.

[Example]	Sketch No. in Illustration	Ref. No. in List	
	1	1	(Before the change)
	2	1	(After the change)
	2	2	

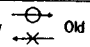
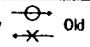
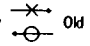
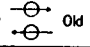
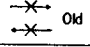
- Indication and meaning of level  
Level

- .....A number of dots indicated is called the level which refers to the assembly-component relation of an assembly part.  
("·" refers to an assembly part.)
- Refers to a component included in an assembly part indicated by one dot (·).
- Refers to a component included in a complete part indicated by two dots (··).  
(It indicates a sub-component of pertinent assembly part indicated by one dot (·).)

- Indication and meaning of interchangeability symbol

(Given under the column "I" next to the quantity column in the list)

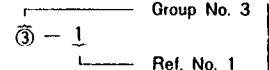
In the case where a parts change took place, one of the following interchangeability symbols is indicated for that part:

Symbol	Interchangeability	Contents note
N	New  Old	New Part is interchangeable for Old Part but not interchangeable conversely.
P	New  Old	Same as symbol N but supply of Old Part is suspended and New Part is sold in the future.
Q	New  Old	New Part is not interchangeable for Old Part but interchangeable conversely.
R	New  Old	New Part is interchangeable for Old Part and vice versa.
S	New  Old	New Part is not interchangeable for Old Part and vice versa.
W		Part newly added.
Z		Part discontinued.
F		Not interchangeable by single part but interchangeable by set of the related parts.
K		Changed only in quantity used.

- Remarks ..... (column "R" given at the right end of the list)  
9-1) A numerical or alphabetic character (symbol) may be indicated under the column "R".  
9-2) A comment (remarks) for a part in question is given at the lower part of the list, following a symbol identical to the aftermentioned symbol when a symbol is indicated under the column "R".

- Virtual No. in illustration

A Sketch No. in illustration containing an encircled numeral indicates other related Group No.

[Example]  indicated.

- Change Effective Machine No.

When a part is changed, a Change Effective Machine No. of such a model for which a New Part is applied is indicated as follows:

[Example] Model columns A ~ F

(Model indication is given in two kinds, namely, 4-model and 6-model indications.)  
correspond to A ~ F in front of Change Effective Machine No..

4-model Indication

(A) =
(B) =
(C) =
(D) =

6-model Indication

(A) =	(D) =
(B) =	(E) =
(C) =	(F) =

[Example] A=F610001 B=F612001

Model column A indicates that a parts change is put into effect from Machine No. 610001 and on. And moreover Model column B indicates that a parts change is put into effect from Machine No. 612001 and on.

[Classification]

E ..... Engine No.  
F ..... Machine Body No.  
R ..... Rotary Unit No. } indicated.

- Additional Group No. found in the Revised Edition

Kindly understand that a Group No. other than consecutive numbers has been entered in the case where the corresponding Group is added within the pertinent Section.

[Example]

Section

BODY SECTION

Group No. Group name

- 46. ENGINE FIXTURE & BATTERY
- 47. FRAME & HYDRAULIC PUMP
- 48. BEVEL GEAR CASE
- 49. TRANSM. CASE & RUNNING CLUTCH
- 50. CONTROL LEVERS
- 51. CRAWLER

- 64. ENGINE FIXTURE & BATTERY (Group added for the YSR1300-N)
- 65. CONTROL LEVERS (Group added for the YSR1300-N)

SNOW REMOVAL SECTION

- 52. CHUTE
- 53. SNOW REMOVAL FRAME & BLOWER

Additional Groups are indicated.

Owing to the improvement of **YANMAR** Product involved or its parts, the contents of this Parts Catalog may be altered without prior notice to you.

## SPECIFICATIONS

Model		MCG91	
Specifications		MCG91	
Item			
Body	Overall length (mm)	1760	
	Overall width (mm)	650	
	Overall height (mm)	860	
	Weight (kg)	160	
	Tread (mm)	420	
Platform	Overall length × Overall width (mm)	970~1130×520×900	
	Max. carrying capacity (kg)	250	
Traveling unit	Min. radius of gyration (m)	Revolving on the spot	
	Speed (km/h)	Forward 1 st	1.5
		Forward 2 nd	3.5
		Reverse 1 st	1.4
Transmission	Main clutch	Belt tension system(V belt B 1 belt)	
	Brake	Internal expanding type	
	Transmission system	All gear, side clutch tine & lock type	
Loading engine		GA90E—SCKN	
Crawler	Width × Pitch × Rink (mm)	180×60×34	
	Crawler bearing length (mm)	610	

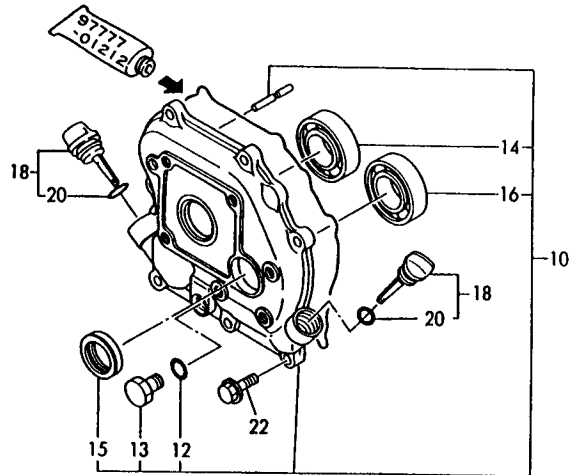
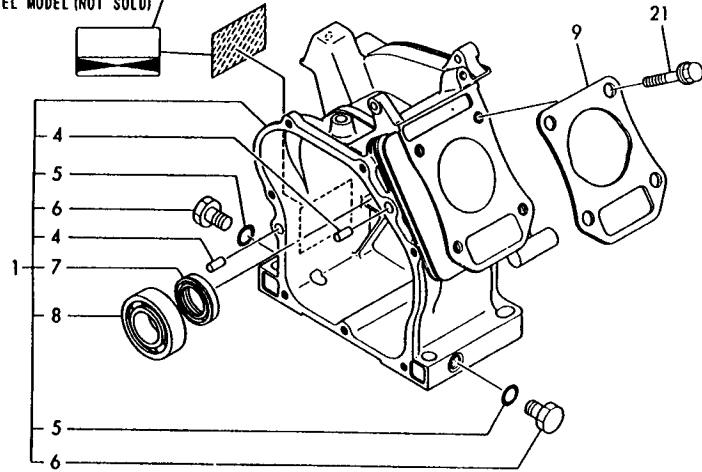
NOTE : Given specifications may be altered for improvement, etc. without prior notice.

## TABLE OF DETAILS OF SPECIFICATIONS

DIVISION	SPECIFICATIONS	Platform Type	Starter Type
		Manual Dump Platform	Recoil Starter
<b>A</b>	<b>MCG91</b>	○	○

1. CYLINDER BLOCK

機体銘板 (非販売部品)  
LABEL MODEL (NOT SOLD)



N075342

-----+  
| 1803 |  
| (1802) |  
+-----+  
NPC-2632

-----+  
| (REMARKS) "EFFECTIVE MACHINE NO." OF  
| ENGINE IS INDICATED ON THE  
| ENGINE LABEL WHICH IS SHOWN  
| IN FIG.1.  
|

1. CYLINDER BLOCK

96.02.29

(A)=GA90E-SCKN (D)=  
(B)= (E)=  
(C)= (F)=

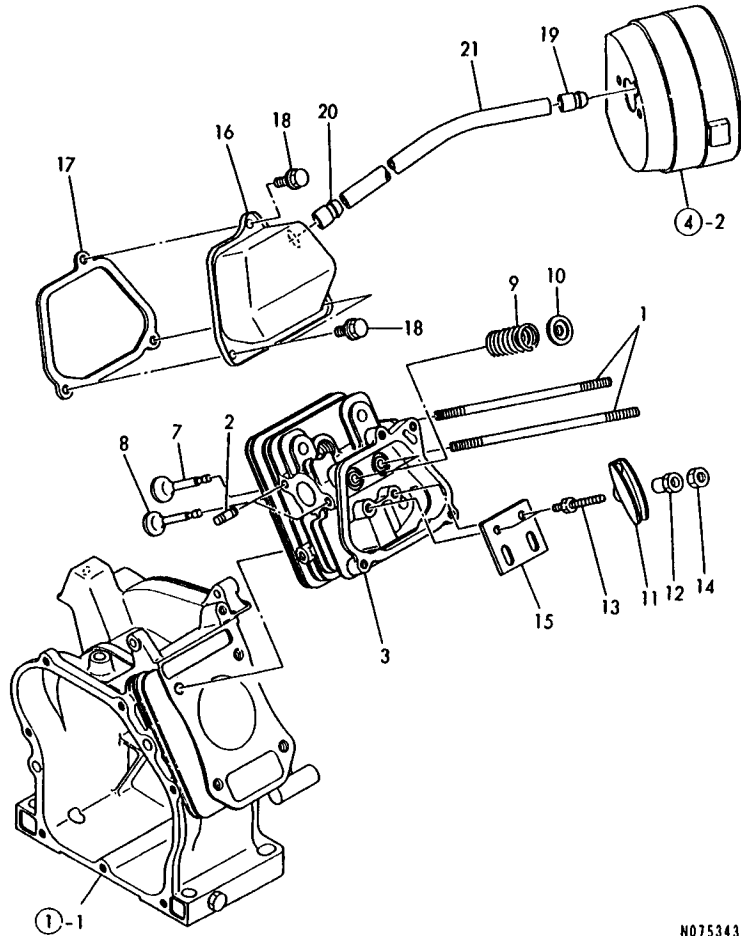
REF. NO.	LEV. 0	PART NO.	DESCRIPTION	Q'TY						I	P/U	A	R
				(A)	(B)	(C)	(D)	(E)	(F)				
1	.	760490-01560	BLOCK ASSY, CYLINDER	1									1
4	..	22312-080120	PARALLEL PIN 8X12	2									10
I 4-1	..	114270-01600	PARALLEL PIN 8X12	2							R		1
(A=EO91603 )													
5	..	24311-000100	O-RING 1A P-10.0	2									10
6	..	26106-100162	BOLT M10X 16 PLATED	2									10
7	..	160510-02220	SEAL, OIL	1									1
8	..	24101-062030	BALL BEARING	1									1
9	.	160490-01330	GASKET	1									1
10	.	760490-01500	COVER, CRANKCASE	1									1
12	..	24311-000100	O-RING 1A P-10.0	1									10
13	..	26106-100162	BOLT M10X 16 PLATED	1									10
14	..	24101-062030	BALL BEARING	1									1
15	..	160510-02220	SEAL, OIL	1									1
16	..	24101-062030	BALL BEARING	1									1
18	.	160611-01740	CAP ASSY	2									1
20	..	24311-000150	O-RING 1A P-15.0	2									10
21	.	160610-04201	BOLT M 8X 53	4									1
22	.	26476-060202	BOLT M 6X 20, TAPPING	7									10

-----+  
| (REMARKS) "EFFECTIVE MACHINE NO." OF  
| ENGINE IS INDICATED ON THE  
| ENGINE LABEL WHICH IS SHOWN  
| IN FIG.1.  
|

-----+  
| REMARKS  
| (チリク) エンジンラフ シ"ツシコ"ウキ ハ) コウモクNO.1 / (REMARKS) "EFFECTIVE MACHINE NO." OF  
| キタイメイハ"ン ノ コ"ウキチ"ス.  
| ENGINE IS INDICATED ON THE  
| ENGINE LABEL WHICH IS SHOWN  
| IN FIG.1.  
|

N075342

2. CYLINDER HEAD & BONNET



N075343

↑-----↑  
 | (REMARKS) "EFFECTIVE MACHINE NO." OF  
 | ENGINE IS INDICATED ON THE  
 | ENGINE LABEL WHICH IS SHOWN  
 | IN FIG.1.  
 ↓-----↓

2. CYLINDER HEAD & BONNET

96.02.29

↑-----↑  
 | 1B04 |  
 | 1(1B02) |  
 ↑-----↑  
 NPC-2632

(A)=GA90E-SCKN (D)=  
 (B)= (E)=  
 (C)= (F)=

REF. NO.	LEV. 0	PART NO.	DESCRIPTION	-----Q'TY-----						I P/U A R
				(A)	(B)	(C)	(D)	(E)	(F)	
1	.	160610-0457D	BOLT M 6X 7D	2						1
2	.	160610-0462D	BOLT M6X 16	2						1
3	.	160490-1101D	HEAD ASSY, CYLINDER	1						1
7	.	160664-1110D	INLET VALVE	1						1
8	.	160664-1111D	EXHAUST VALVE	1						1
9	.	160490-1112D	SPRING, VALVE	2						1
10	.	160664-1118D	RETAINER, VALVE	2						1
11	.	160690-1120D	ARM, ROCKER	2						1
12	.	160690-1122D	PIVOT, ROCKER ARM	2						1
13	.	160690-1127D	BOLT	2						1
13-1	.	160690-11271	BOLT	2						N 1
(A=E030025 )										
14	.	160690-1128D	NUT M6X D.5	2						1
15	.	160490-1129D	GUIDE PLATE	1						1
16	.	160490-1130D	BONNET	1						1
17	.	160490-1131D	GASKET, BONNET	1						1
18	.	26476-060142	BOLT M 6X 14, TAPPING	3						10
19	.	160520-0305D	BREATHER.MT.	1						1
20	.	160610-0305D	BREATHER ASSY	1						1
21	.	160510-0318D	PIPE, BREATHER	1						1

----- REMARKS -----  
 (チユウ) エンジンラベルにシリアルナンバーがハコウモクNO.1 / (REMARKS) "EFFECTIVE MACHINE NO." OF  
 \*タイメイハコウノコウキチチ入。  
 | ENGINE IS INDICATED ON THE  
 | ENGINE LABEL WHICH IS SHOWN  
 | IN FIG.1.

N075343

3. TOOL & LABEL

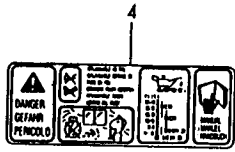
96.02.29



Clean out air filter every 20-30 hours. (every 10 hours in dusty areas)

After washing the sponge with kerosene, thoroughly wring out and let dry.

After drying, soak in new engine oil, wring well and use.



6

PULITE IL FILTRO DELL'ARIA OGNI 20-30 ORE DI LAVORO (OGNI 10 ORE IN AMBIENTE DI LAVORO POLVEROSO)

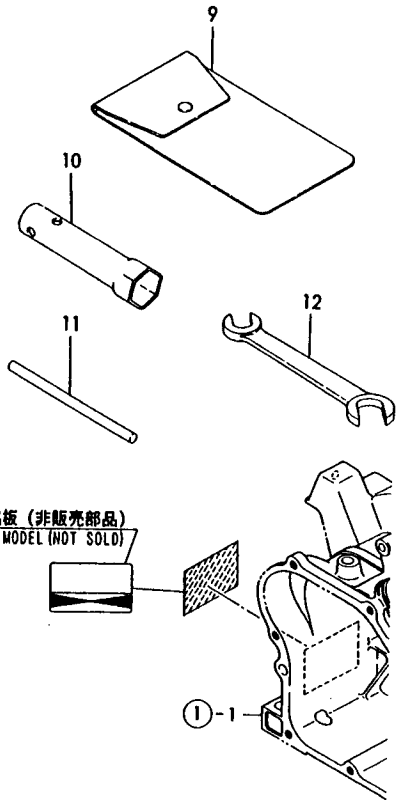
DOPO AVERE LAVATO CON KEROSINE L'ELEMENTO FILTRANTE IN SPUGNA, STRIZZATELO E LASCIATELO ASCIUGARE COMPLETAMENTE.

UNA VOLTA ASCIUTTO, IMBEVELTO CON OLIO MOTORE E STRIZZATELO BENE PRIMA DI REINSTALLARLO.

7

NETTOYER FILTRE A AIR PAR DE 20 A 30 HEURES. (NETTOYER PER 10 HEURES A ENDOIT POUSSIEREUX)

NETTOYER EPONGE AVEC HUILE D'ECLAIRAGE OU ESSENCE ET SECHER BIEN APRES PRESSER. ENSUITE PLONGER DANS ESSENCE POUR ENLEVER HUILE EXCEDENT EN BIEN PRESSANT.



N075344

(REMARKS) "EFFECTIVE MACHINE NO." OF ENGINE IS INDICATED ON THE ENGINE LABEL WHICH IS SHOWN

IN FIG.1.  
(1) REF.NO.5 YANMAR LIGHT YELLOW,  
5-1 YANMAR NEW RED.

3. TOOL & LABEL

+-----+  
| 1805 |  
| (1802) |  
+-----+  
NPC-2632

(A)=GA9DE-SCKN (D)=  
(B)= (E)=  
(C)= (F)=

REF. NO.	LEV. 0	PART NO.	DESCRIPTION	-----Q'TY-----						I	P	U	A	R
				(A)	(B)	(C)	(D)	(E)	(F)					
2	.	160798-07100	LABEL, FINGER START	1										1
4	.	160708-07260	MARK, CAUTION	1										1
5	.	160520-07271	LABEL, DRAIN	1										1
I 5-1	.	160520-07272 (A=EO33621)	LABEL, DRAIN	1						S				1 (1)
6	.	160664-07360	LABEL, AIR CLEAWER	1										1
7	.	160662-07370	LABEL, AIR CLEANER	1										1
8	.	160664-07370	LABEL, AIR CLEANER	1										1
9	.	160110-92610	BAG, TOOL	1										1
10	.	160120-92700	SPANNER, BOX	1										1
11	.	160110-92710	BAR	1										1
12	.	28110-100120	WRENCH 10X12	1										1

----- REMARKS -----

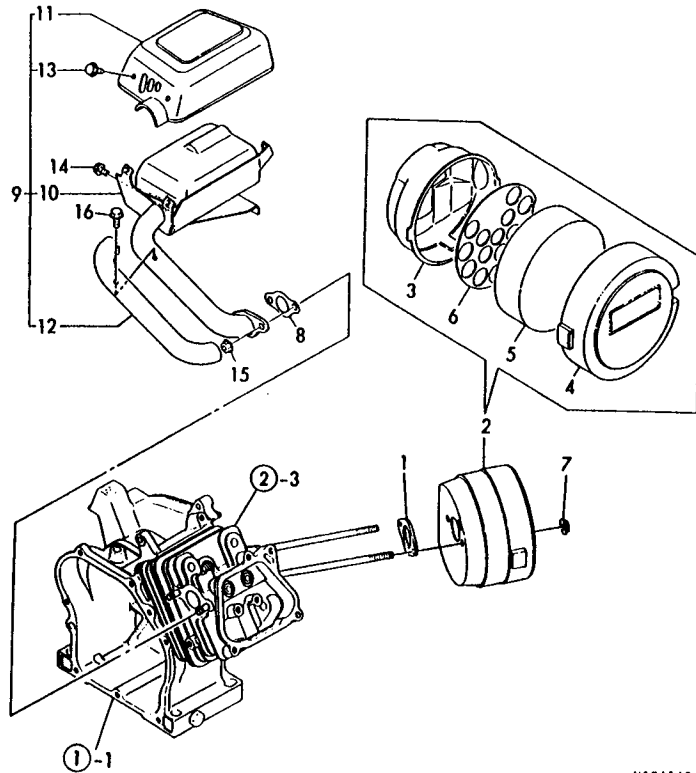
(予注) エンジン7" のツシコウキ ハ コマクNO.1 ノ (REMARKS) "EFFECTIVE MACHINE NO." OF ENGINE IS INDICATED ON THE ENGINE LABEL WHICH IS SHOWN  
\*タイメイハツノ コウキチアス。

(1) エタシNO.5 ヤンマ-ライトイエロ-, (1) REF.NO.5 YANMAR LIGHT YELLOW,  
5-1 ヤンマ-ニューレツト" 5-1 YANMAR NEW RED.

N075344



4. AIR CLEANER & MUFFLER



N074345

-----+-----  
 | (REMARKS) "EFFECTIVE MACHINE NO." OF  
 |  
 | ENGINE IS INDICATED ON THE  
 | ENGINE LABEL WHICH IS SHOWN  
 | IN FIG.1.  
 |-----+-----

4. AIR CLEANER & MUFFLER

96.02.29

-----+-----  
 | 1806 |  
 | (1802) |  
 -----+-----  
 NPC-2632

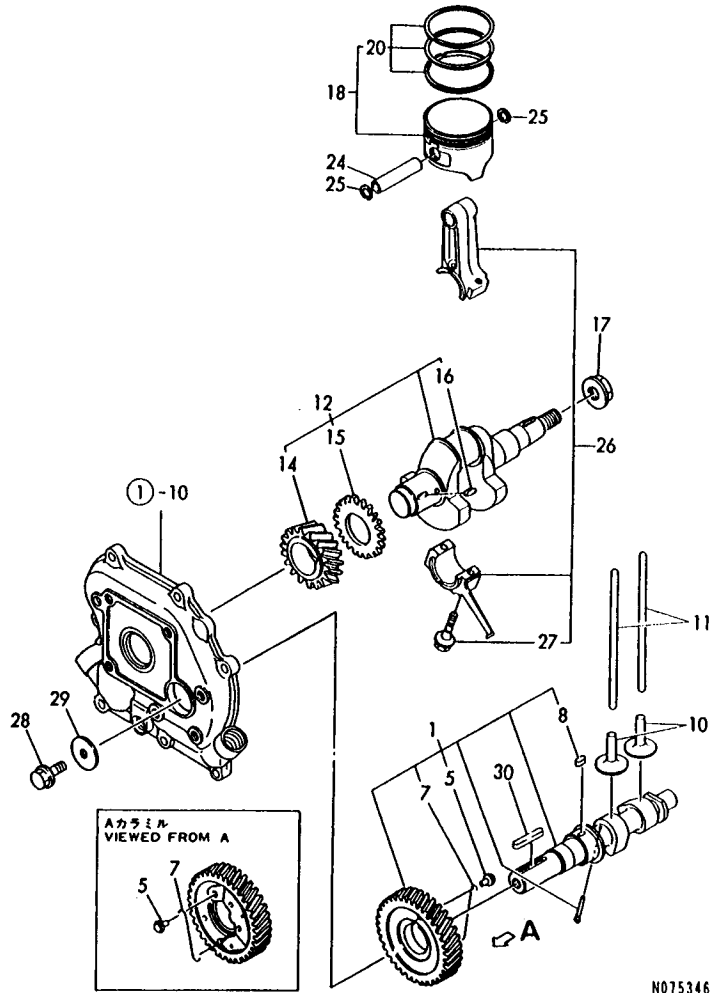
(A)=GA90E-SCKN (D)=  
 (B)= (E)=  
 (C)= (F)=

REF. NO.	LEV. 0	PART NO.	DESCRIPTION	-----Q'TY-----						I	P/U	A	R
				(A)	(B)	(C)	(D)	(E)	(F)				
1	.	160762-12050	GASKET, IN. MANIFOLD	1								1	
I 1-	1	160762-12050 (A=E030620 )	GASKET, IN. MANIFOLD	2								K	1
2	.	160490-12500	CLEANER ASSY, AIR	1									1
3	..	160490-12520	BODY, AIR CLEANER	1									1
4	..	160610-12530	CAP, AIR CLEANER	1									1
5	..	160610-12540	ELEMENT, AIR CLEANER	1									1
6	..	160610-12550	HOLDER, ELEMENT	1									1
7	.	26366-060002	NUT M 6	2									10
8	.	160510-13200	GASKET, MUFFLER	1									1
9	.	160493-13550	MUFFLER	1									1
I 9-	1	160493-13551 (A=E032840 )	MUFFLER ASSY	1								R	1
10	..	160493-13500	MUFFLER	1									1
I 10-	1	160493-13501 (A=E032840 )	MUFFLER	1								R	1
10-	2	160493-13501	MUFFLER	1									1
11	..	160493-13530	COVER, MUFFLER	1									1
12	..	160493-13780	COVER, ELBOW	1									1
13	..	26106-060082	BOLT M 6X 8 PLATED	4									10
14	.	26106-060082	BOLT M 6X 8 PLATED	1									10
I 14-	1	26476-060142 (A=E032840 )	BOLT M 6X 14, TAPPING	1								S	10
15	.	26366-060002	NUT M 6	2									10
I 16	.	26476-060142 (A=E032840 )	BOLT M 6X 14, TAPPING	1								Z	10

-----+----- REMARKS -----+-----  
 | (左) (右) のエンジンラベルにエンジン番号が示されています。 | (REMARKS) "EFFECTIVE MACHINE NO." OF  
 | \*タイメイハシ / コウキチヤス。 | ENGINE IS INDICATED ON THE  
 | | ENGINE LABEL WHICH IS SHOWN  
 | | IN FIG.1.  
 |-----+-----

N075345

5. CRANKSHAFT, PISTON & CAMSHAFT



N075346

↑-----↑  
 | (REMARKS) "EFFECTIVE MACHINE NO." OF  
 | ENGINE IS INDICATED ON THE  
 | ENGINE LABEL WHICH IS SHOWN  
IN FIG.1.

↑-----↑  
 | 1807 |  
 | (1802) |  
 |-----↑  
 NPC-2632

5. CRANKSHAFT, PISTON & CAMSHAFT

96.02.29

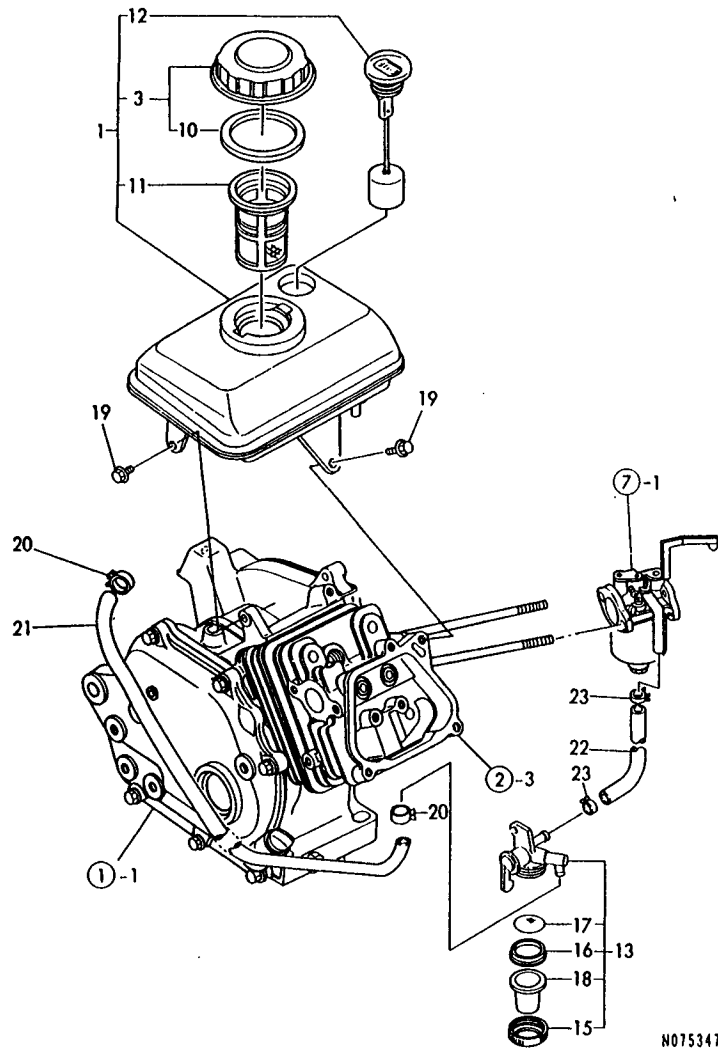
(A)=GA90E-SCKN (D)=  
 (B)= (E)=  
 (C)= (F)=

REF. NO.	LEV. 0	PART NO.	DESCRIPTION	-----Q'TY-----						I	P	U	A	R
				(A)	(B)	(C)	(D)	(E)	(F)					
1	.	160490-14050	CAMSHAFT ASSY	1										1
7	..	160611-14560	SPRING	1										1
8	..	114250-21290	KEY 4X 7	1										1
10	.	160490-14200	TAPPET	2										1
11	.	160490-14400	ROD,PUSH	2										1
12	.	760490-21700	CRANKSHAFT ASSY	1										1
14	..	160530-21200	GEAR, CRANKSHAFT	1										1
15	..	160590-21210	GEAR, IDLE	1										1
16	..	160610-21290	KEY 4X 10	1										1
17	.	26376-120002	U-NUT M12	1										10
18	.	160490-22010	PISTON ASSY	1										1
20	..	760490-22500	RING SET, PISTON	1										1
24	.	160490-22300	PIN, PISTON	1										1
25	.	22252-000120	CIRCLIP 12	2										10
26	.	160490-23030	ROD ASSY, CONNECTING	1										1
27	..	160610-23201	BOLT, ROD	2										2
I 27-	1	26106-060302	BOLT M 6X 30 PLATED	2									R	10
		(A=ED91603 )												
28	.	26106-060162	BOLT M 6X 16 PLATED	1										10
29	.	160510-14550	WASHER	1										1
30	.	160810-21290	KEY 4X24	1										1

----- REMARKS -----  
 (チリ) エンジンラベルのシリアルナンバーは、この図表の1 / (REMARKS) "EFFECTIVE MACHINE NO." OF  
 \*タイマイハット / コウキアス。  
 | ENGINE IS INDICATED ON THE  
 | ENGINE LABEL WHICH IS SHOWN  
 | IN FIG.1.

N075346

6. FUEL OIL TANK & FUEL OIL LINE



N075347

↑-----↑  
 | 1808 |  
 | (1802) |  
 ↑-----↑  
 NPC-2632

↑-----↑  
 | (REMARKS) "EFFECTIVE MACHINE NO." OF  
 | ENGINE IS INDICATED ON THE  
 | ENGINE LABEL WHICH IS SHOWN  
 | IN FIG.1.  
 ↓-----↓

6. FUEL OIL TANK & FUEL OIL LINE

96.02.29

(A)=GA9DE-SCKN (D)=  
 (B)= (E)=  
 (C)= (F)=

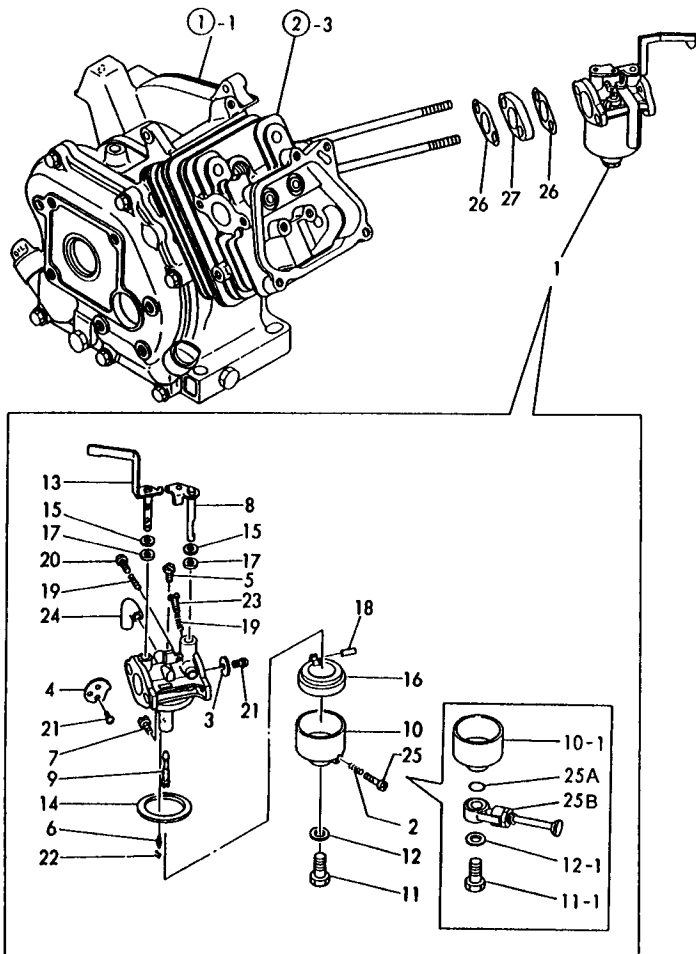
REF. NO.	LEV. 0	PART NO.	DESCRIPTION	Q'TY						I	P/U	A	R
				(A)	(B)	(C)	(D)	(E)	(F)				
1	.	760491-55700	TANK ASSY ,FUEL	1									1
I 1- 1	.	760493-55700	TANK,FUEL (RED)(50)	1							N		1
		(A=EXXX )											
3	..	160710-55061	CAP ASSY, FUEL TANK	1									1
10	...	160393-55050	GASKET, TANK CAP	1									1
11	..	160610-55100	STRAINER	1									1
12	..	183210-55150	GAUGE, FUEL	1									1
13	.	160593-55300	COCK ASSY, FUEL	1									1
15	..	160710-55360	RING	1									1
16	..	160710-55370	GASKET	1									1
17	..	160710-55382	FILTER	1									1
18	..	160610-55390	CUP, COCK	1									1
19	.	26476-060142	BOLT M 6X 14, TAPPING	3									10
20	.	106990-44660	BAND, HOSE	2									1
21	.	160491-59350	PIPE, FUEL	1									1
22	.	160490-59360	HOSE, FUEL (B-145)	1									1
23	.	124060-77680	CLAMP 10	2									5

↑-----↑  
 | (REMARKS) "EFFECTIVE MACHINE NO." OF  
 | ENGINE IS INDICATED ON THE  
 | ENGINE LABEL WHICH IS SHOWN  
 | IN FIG.1.  
 ↓-----↓

↑-----↑  
 | (REMARKS) "EFFECTIVE MACHINE NO." OF  
 | ENGINE IS INDICATED ON THE  
 | ENGINE LABEL WHICH IS SHOWN  
 | IN FIG.1.  
 ↓-----↓

N075347

7. CARBURETOR



-----+  
 | (REMARKS) "EFFECTIVE MACHINE NO." OF  
 | ENGINE IS INDICATED ON THE  
 | ENGINE LABEL WHICH IS SHOWN  
IN FIG.1.

N075348

+-----+  
 | 1809 |  
 | (1802) |  
 +-----+  
 NPC-2632

7. CARBURETOR

96.02.29

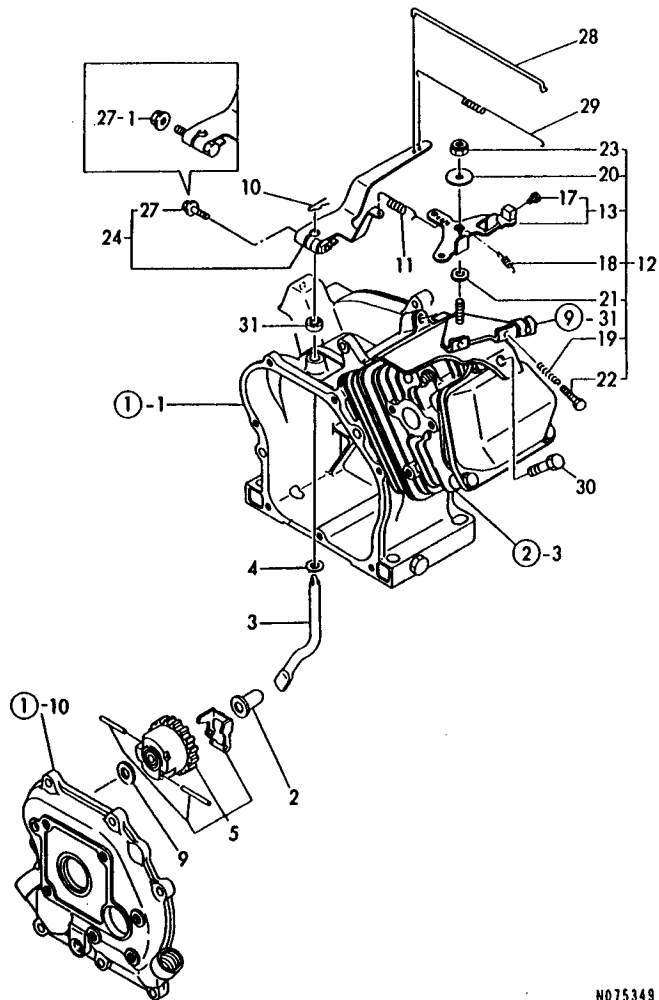
(A)=GA90E-SCKN (D)=  
 (B)= (E)=  
 (C)= (F)=

REF. NO.	LEV. 0	PART NO.	DESCRIPTION	-----Q'TY-----						I	P	U	A	R
				(A)	(B)	(C)	(D)	(E)	(F)					
1	.	160490-56010	CARBURETOR ASSY	1										1
I 1-1	.	160490-56011 (A=E038225 )	CARBURETOR ASSY	1								N		1
I 1-2	.	160491-56010 (A=E047515 )	CARBURETOR COMPL.	1								N		1
I 2	..	181230-56380	SPRING	1								Z		1
		(A=E047515 )												
3	..	160492-56520	VALVE, THROTTLE	1										1
4	..	160492-56530	VALVE	1										1
5	..	160492-56540	JET, PILOT	1										1
6	..	160492-56550	NEEDLE	1										1
7	..	160495-56560	JET, MAIN	1										1
I 7-1	..	160495-56561 (A=E038225 )	JET, MAIN	1								N		1
8	..	160492-56570	SHAFT ASSY, THROTTLE	1										1
9	..	160492-56580	NOZZLE, MAIN	1										1
I 9-1	..	160492-56581 (A=E038225 )	NOZZLE, MAIN	1								N		1
10	..	160490-56590	BODY, FLOAT	1										1
I 10-1	..	160492-56591 (A=E047515 )	BODY, FLOAT	1								S		1
11	..	160490-56600	BOLT	1										1
I 11-1	..	160492-56600 (A=E047515 )	BOLT M5	1								S		1
12	..	160495-56600	GASKET	1										1
I 12-1	..	160802-56480 (A=E047515 )	GASKET	1								S		1
13	..	160492-56610	SHAFT, CHOKE	1										1
14	..	160510-56610	GASKET	1										1
15	..	160492-56620	GASKET	2										1
16	..	160510-56620	FLOAT ASSY	1										1
17	..	160492-56630	SEAL	2										1
18	..	160610-56630	PIN, FLOAT	1										1
19	..	181130-56640	SPRING	2										1
20	..	160692-56710	SCREW	1										1
21	..	160710-56710	SCREW	3										1
22	..	160769-56720	CLAMP	1										1
23	..	160667-56750	SCREW, ADJUSTING	1										1
24	..	160692-56770	HOSE	1										1
I 25	..	160610-56900 (A=E047515 )	SCREW	1								Z		1
I 25A	..	160692-56620	O-RING	1									W	1
		(A=E047515 )												
I 25B	..	160692-56760 (A=E047515 )	BODY, COCK	1									W	1
26	.	160667-56150	GASKET, CARBURETOR	2										1
27	.	160667-56160	SPACER, CARBURETOR	1										1

-----+  
 | REMARKS |  
 | (注) エンジンラベルにシリアルナンバーが記載されている。 | (REMARKS) "EFFECTIVE MACHINE NO." OF  
 | \*タイメイルラベルにシリアルナンバーが記載されている。 | ENGINE IS INDICATED ON THE  
 | | ENGINE LABEL WHICH IS SHOWN  
 | | IN FIG.1.  
 |-----

N075348

8. GOVERNOR & CONTROL DEVICE



N075349

↑-----↑  
 | (REMARKS) "EFFECTIVE MACHINE NO." OF  
 | ENGINE IS INDICATED ON THE  
 | ENGINE LABEL WHICH IS SHOWN  
 | IN FIG.1.  
 ↓-----↓

8. GOVERNOR & CONTROL DEVICE

96.02.29

↑-----↑  
 | 1B10 |  
 | (1B02) |  
 ↑-----↑  
 NPC-2632

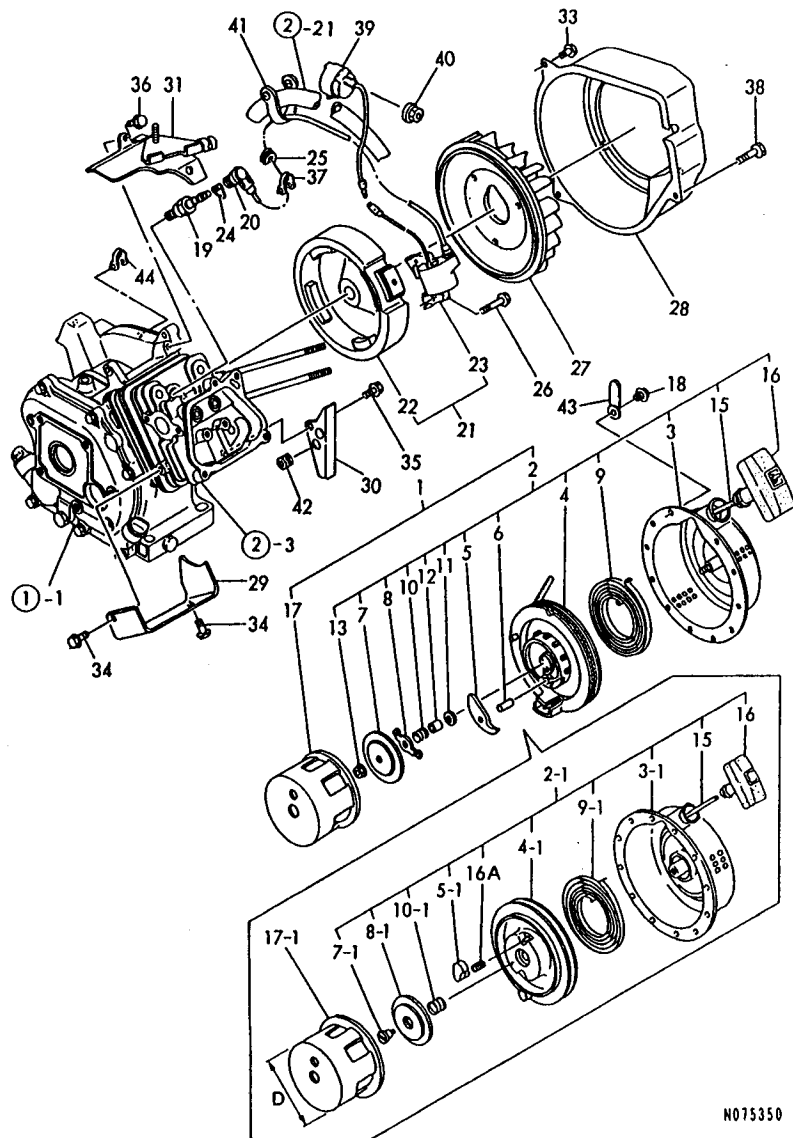
(A)=GA90E-SCKN (D)=  
 (B)= (E)=  
 (C)= (F)=

REF. NO.	LEV. 0	PART NO.	DESCRIPTION	-----Q'TY-----						I	P	U	A	R
				(A)	(B)	(C)	(D)	(E)	(F)					
2	.	160690-61300	SPINDLE, GOVERNOR	1										1
3	.	160690-61310	SHAFT, GOV. LEVER	1										1
4	.	160690-61450	WASHER	2										1
5	.	160690-61600	GEAR ASSY, GOV.	1										1
9	.	160120-76940	WASHER	1										1
10	.	22372-080000	SNAP PIN (JASO 8)	1										10
11	.	160490-66010	SPRING	1										1
I 11- 1	.	160490-66020 (A=E047915 )	SPRING	1								N		1
12	.	160493-66110	CONTROL ASSY	1										1
13	..	160493-66051	LEVER ASSY, CONTROL	1										1
17	...	26117-040088	BOLT M 4X 8 PLATED	1										10
18	..	160664-66220	SPRING, RETURN	1										1
19	..	160520-66291	SPRING	2										1
20	..	160670-66350	COLLAR	1										1
21	..	160120-76940	WASHER	1										1
22	..	26117-040257	BOLT M 4X 25	2										10
23	..	26347-060002	U-NUT M 6	1										10
24	.	160490-66190	LEVER, GOVERNOR	1										1
27	..	26106-060252	BOLT M 6X 25 PLATED	1										10
I 27- 1	..	26366-060002 (A=E091603 )	NUT M 6	1								S		10
28	.	160490-66200	LINK, THROTTLE	1										1
29	.	160490-66211	SPRING	1										1
I 30	.	26476-060142 (A=FROM 1ST )	BOLT M 6X 14, TAPPING	2									Z	10
I 31	.	114770-61600 (A=E038225 )	SEAL, OIL	1									W	1

↑-----↑  
 | (REMARKS) "EFFECTIVE MACHINE NO." OF  
 | (タイマ) エンジンラック システムは、この NO.1 の (REMARKS) "EFFECTIVE MACHINE NO." OF  
 | \*タイマは、この NO.1 の (REMARKS) "EFFECTIVE MACHINE NO." OF  
 | ENGINE IS INDICATED ON THE  
 | ENGINE LABEL WHICH IS SHOWN  
 | IN FIG.1.  
 ↓-----↓

N075349

9. FLY. MAGNET & STARTING DEVICE



N075350

(REMARKS) "EFFECTIVE MACHINE NO." OF  
 ENGINE IS INDICATED ON THE  
 ENGINE LABEL WHICH IS SHOWN  
 IN FIG.1.  
 (1) D= REF.NO.17 75M/M, 17-1 64.2M/M.  
 (2) DIFFERENCE BETWEEN NO.9 & 9-1  
 REFER TO NO.4 & 4-1.

9. FLY. MAGNET & STARTING DEVICE

96.02.29

+-----+  
 I 1811 I  
 I (1802) I  
 +-----+  
 NPC-2632

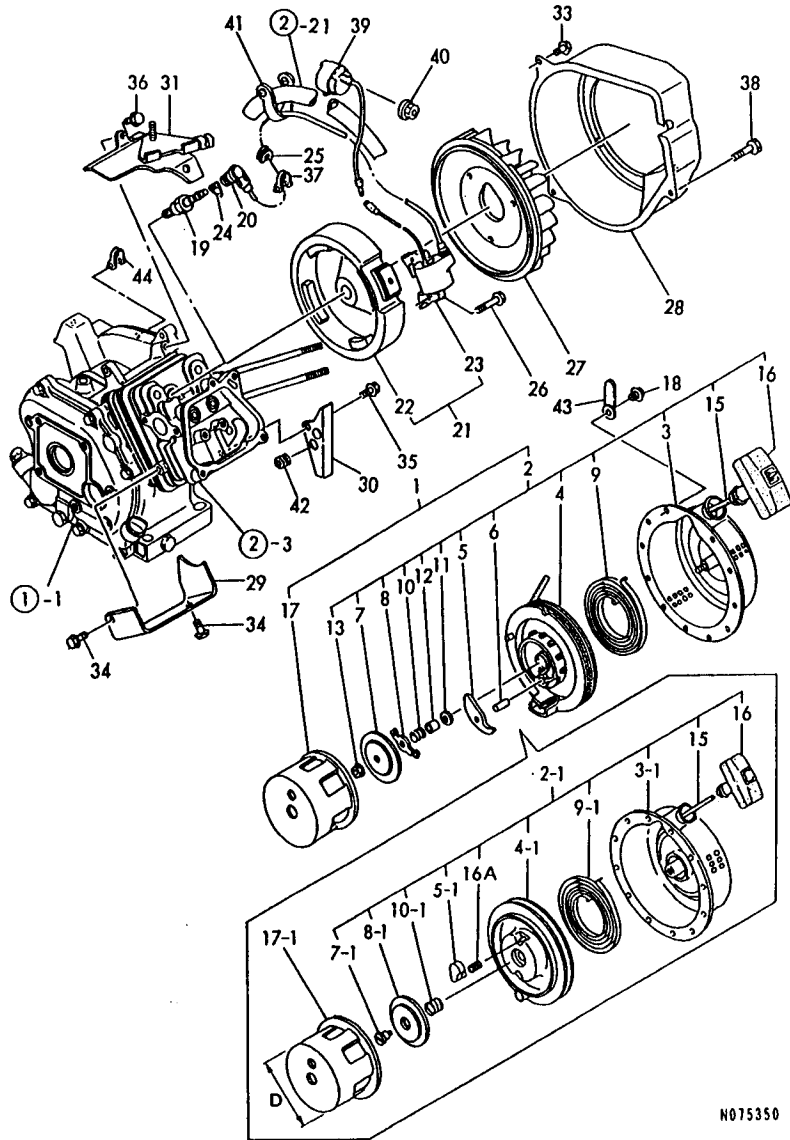
(A)=GA90E-SCKN (D)=  
 (B)= (E)=  
 (C)= (F)=

REF. NO.	LEV. 0	PART NO.	DESCRIPTION	-----Q'TY-----						I	P	U	A	R
				(A)	(B)	(C)	(D)	(E)	(F)					
1	.	160490-76050	STARTER ASSY, RECOIL	1										
I 1- 1	.	160490-76051 (A=EO91603 )	STARTER ASSY, RECOIL	1							N			1
2	..	160490-76250	STARTER ASSY, RECOIL	1										1
I 2- 1	..	160490-76251 (A=EO91603 )	RE-COIL STARTER	1							S			1
3	...	160490-76610	CASE, STARTER	1										1
I 3- 1	...	160490-76611 (A=EO91603 )	CASE ASSY, STARTER	1							S			1
4	...	160490-76510	REEL	1										1
I 4- 1	...	160490-76511 (A=EO91603 )	REEL	1							S			1
5	...	160692-76800	RATCHET	1										1
I 5- 1	...	160690-76801 (A=EO91603 )	RATCHET	1							S			1
I 6	...	160692-76530 (A=EO91603 )	PIN, RATCHET	1							Z			1
7	...	160692-76810	PLATE, FRICTION	1										1
I 7- 1	...	160690-76580 (A=EO91603 )	PLATE, FRICTION	1							S			1
8	...	160692-76540	GUIDE, RATCHET	1										1
I 8- 1	...	160690-76531 (A=EO91603 )	GUIDE, RATCHET	1							S			1
9	...	160692-76580	SPRING, SPIRAL	1										1
I 9- 1	...	160690-76540 (A=EO91603 )	SPRING, SPIRAL	1							S			1 (2)
10	...	160692-76550	SPRING, FRICTION	1										1
I 10- 1	...	160690-76561 (A=EO91603 )	SPRING, FRICTION	1							S			1
11	...	160692-76560	WASHER, THRUST	1										1
I 12	...	160692-76820 (A=EO91603 )	SHAFT	1							Z			1
I 13	...	26367-060002 (A=EO91603 )	NUT M 6	1							Z			30
I 15	...	160490-76580	ROPE, STARTER	1										1
I 16	...	160490-76600	KNOB, STARTER	1										1
I 16A	...	160690-76570 (A=EO91603 )	SPRING, RETURN	2							W			1
17	..	160490-76590	PULLEY, STARTER	1										1
I 17- 1	..	160490-76591 (A=EO91603 )	PULLEY, STARTER	1							S			1 (1)
18	.	26106-060082	BOLT M 6X 8 PLATED	4										10
19	.	160690-78010	PLUG, SPARK	1										1
I 19- 1	.	160690-78020 (A=EO36288 )	PLUG, SPARK	1							N			1
20	.	160700-78040	CAP, PLUG	1										1
I 21	.	160490-78050	FLYWHEEL MAGNETO	1										1
I 22	..	160490-78500	ROTOR	1										1
I 23	..	160490-78510	COIL, IGNITION	1										1
24	.	160700-78050	TERMINAL, PLUG	1										1
25	.	160700-78720	GROMMET	1										1
26	.	26476-060302	BOLT M 6X 30, TAPPING	2										10
27	.	160525-45010	FAN	1										1
28	.	160490-45110	CASE, FAN (RED) (50)	1										1

\*\* CONTINUE \*\*

N075350

9. FLY MAGNET & STARTING DEVICE



N075350

(REMARKS) "EFFECTIVE MACHINE NO." OF

ENGINE IS INDICATED ON THE ENGINE LABEL WHICH IS SHOWN IN FIG.1.

(1) D= REF.NO.17 75M/M, 17-1 64.2M/M.  
(2) DIFFERENCE BETWEEN NO.9 & 9-1 REFER TO NO.4 & 4-1.

9. FLY MAGNET & STARTING DEVICE

↑-----↑  
↑ 1B12 ↓  
↑ (1B02) ↓  
↑-----↑  
NPC-2632

96.02.29

(A)=GA90E-SCKN (D)=  
(B)= (E)=  
(C)= (F)=

REF. NO.	LEV. 0	PART NO.	DESCRIPTION	-----Q'TY-----						I	P	U	A	R
				(A)	(B)	(C)	(D)	(E)	(F)					
29	.	160490-45200	COVER	1										1
30	.	160490-45211	COVER, REAR	1										1
31	.	160490-45220	HEAD, CYLINDER	1										1
33	.	26476-060142	BOLT M 6X 14, TAPPING	2										10
34	.	26476-060142	BOLT M 6X 14, TAPPING	2										10
35	.	26476-060142	BOLT M 6X 14, TAPPING	1										10
36	.	26476-060142	BOLT M 6X 14, TAPPING	2										10
37	.	29610-000950	CLAMP, SPEED 095	1										1
38	.	26476-060162	BOLT M 6X 16	1										10
39	.	160611-77250	SWITCH, STOP	1										1
40	.	26366-080002	NUT M 8	1										10
I 41	.	29610-001400	CLAMP	1									W	1
		(A=E020573 )												
I 42	.	160341-01950	PIPE	1									W	1
		(A=E019716 )												
I 43	.	160710-78700	CLAMP, CORD	1									W	1
		(A=EXXXXX )												
I 43- 1	.	160710-78700	CLAMP, CORD	1									Z	1
		(A=E032840 )												
I 44	.	29610-000650	CLAMP, SPEED 065	1									W	1
		(A=E019716 )												
I 44- 1	.	29610-000650	CLAMP, SPEED 065	2									K	1
		(A=E032840 )												

REMARKS (チキウ) エンジンラベル上の有効機番を (REMARKS) "EFFECTIVE MACHINE NO." OF

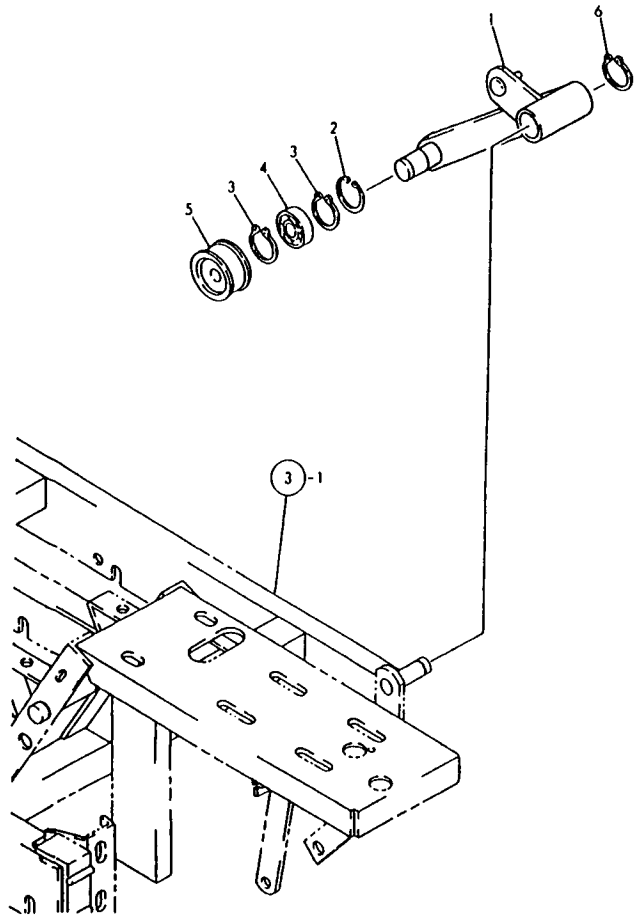
キタイメイハシノ コウキキチス。

ENGINE IS INDICATED ON THE ENGINE LABEL WHICH IS SHOWN IN FIG.1.

(1) D= エンジンNO.17 75M/M, 17-1 64.2M/M. (1) D= REF.NO.17 75M/M, 17-1 64.2M/M.  
(2) エンジンNO.9,9-1 ノ チカハシ 4,4-1 オ (2) DIFFERENCE BETWEEN NO.9 & 9-1  
ヤンシヨウ ネカイマス。 REFER TO NO.4 & 4-1.

N075350

1. TENSION ARM



N073084

+-----+  
 | 1C03 |  
 | 1C02 |  
 +-----+  
 NPC-2947

1. TENSION ARM

96.02.29

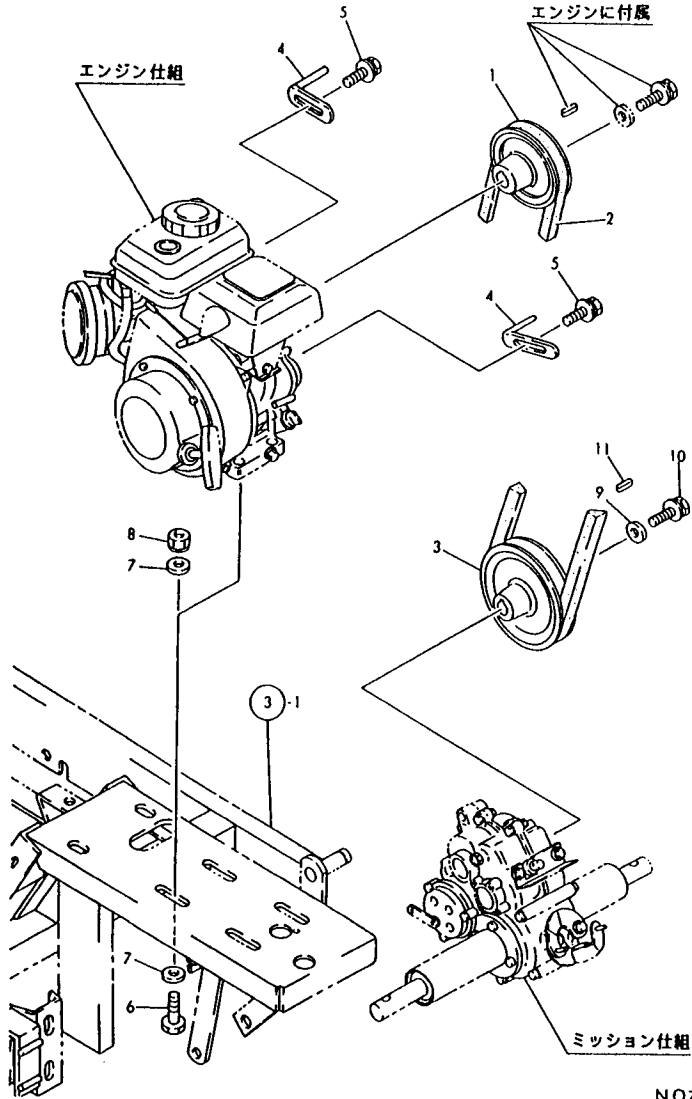
(A)=MCG91(-PQ(R (D)=  
 (B)= (E)=  
 (C)= (F)=

REF. NO.	LEV. 0	PART NO.	DESCRIPTION	-----Q'TY-----						I P/U A R
				(A)	(B)	(C)	(D)	(E)	(F)	
1	.	1N3501-22000	ARM A, TENSION	1						1
2	.	22252-000350	CIRCLIP 35	1						10
3	.	22242-000150	CIRCLIP 15	2						10
4	.	24104-062024	BALL BEARING	1						1
5	.	1N1430-22070	ROLLER, TENSION	1						1
6	.	22242-000160	CIRCLIP 16	1						10

N073084



2. PULLEY



NO73085

↑-----↑  
↑1C04↑  
↑1C02↑  
↑-----↑  
NPC-2947

2. PULLEY

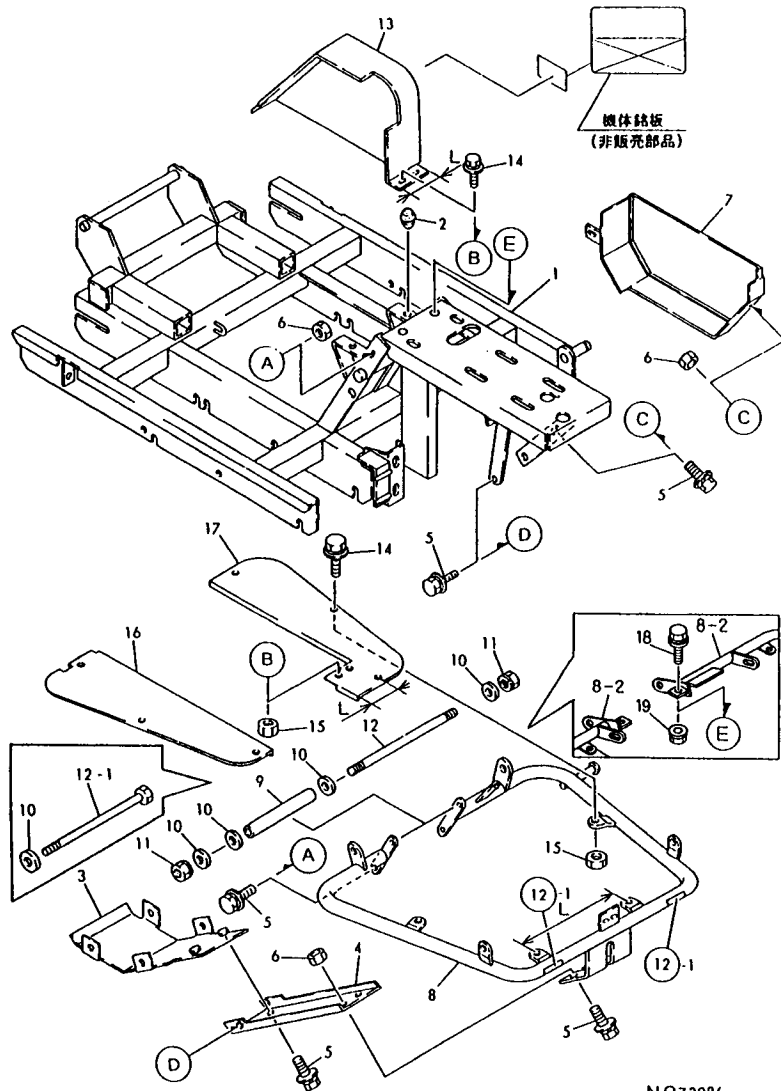
96.02.29

(A)=MCG91(-PQ(R (D)=  
(B)= (E)=  
(C)= (F)=

REF. NO.	LEV. 0	PART NO.	DESCRIPTION	-----Q'TY-----						I P/U A R
				(A)	(B)	(C)	(D)	(E)	(F)	
1	.	1N3501-21000	PULLEY,ENGINE	1						1
2	.	25123-003201	V-BELT	1						1
3	.	1N3501-21010	PULLEY,TRANSMISSION	1						1
4	.	1N1291-22020	GUARD 40,BELT	2						1
5	.	26018-080164	BOLT M 8X 16	2						20
6	.	26116-080452	BOLT M 8X 45 PLATED	4						10
7	.	22137-080000	WASHER 8, POLISHED	8						10
8	.	26051-080002	NUT M 8	4						20
9	.	1N1240-21040	WASHER	1						1
10	.	26016-060164	BOLT 6X16 W/L.W.	1						30
11	.	22550-050251	KEY 5X25	1						1

NO73085

3. BODY FRAME



NO73086

↑-----↑  
 I 1C06 I  
 I (1C05) I  
 ↑-----↑  
 NPC-2947

↑-----↑  
 I (1) REF. NO.8 HAS L=273 MM WHILE REF.  
 I NO.8-1 HAS L=223 MM.  
 I (2) REF. NO.17 HAS L=82 MM WHILE REF.  
 I NO.17-1 HAS L=32 MM.  
 ↓-----↓

3. BODY FRAME

96.02.29

(A)=MCG91(-PR) (D)=  
 (B)= (E)=  
 (C)= (F)=

REF. NO.	LEV. 0	PART NO.	DESCRIPTION	-----Q'TY-----						I	P/U	A	R
				(A)	(B)	(C)	(D)	(E)	(F)				
1	.	1N3501-31000	FRAME, BODY	1								1	
2	.	1N1101-44040	RUBBER, STOPPER	1								1	
2-1	.	1N1101-44040	RUBBER, STOPPER	2							K	1	
(A=F010452 )													
3	.	1N3500-58130	PROTECTOR	1								1	
4	.	1N3501-58090	GUARD, UNDER	1								1	
5	.	26018-080204	BOLT M 8X 20	9								20	
6	.	26367-080002	U-NUT M 8	7								10	
7	.	1N3501-58041	COVER A, UNDER	1								1	
8	.	1N3501-54000	STEP	1								1	
I 8-1	.	1N3501-54001	STEP	1							S	1 (1)	
(A=F010151 )													
I 8-2	.	1N3501-54002	STEP	1								S	
(A=F017334 )													
I 9	.	1N1550-54100	PIPE (C)	1								Z 1	
(A=F017334 )													
10	.	22137-100000	WASHER 10, POLISHED	4								10	
10-1	.	22137-100000	WASHER 10, POLISHED	3								K 10	
(A=F010529 )													
I 10-2	.	22137-100000	WASHER 10, POLISHED	3								Z 10	
(A=F017334 )													
11	.	26051-100002	NUT M10	2								10	
11-1	.	26051-100002	NUT M10	1								K 10	
(A=F010529 )													
I 11-2	.	26051-100002	NUT M10	1								Z 10	
(A=F017334 )													
12	.	1N3500-54090	BOLT, STAY	1								1	
12-1	.	26117-101902	BOLT M10X190 PLATED	1								S 5	
(A=F010529 )													
I 12-2	.	26117-101902	BOLT M10X190 PLATED	1								Z 5	
(A=F017334 )													
13	.	1N3501-58120	COVER, PULLEY	1								1	
14	.	1N1291-58080	BOLT 6X16 W/P&SW.	9								1	
15	.	26367-060002	NUT M 6	8								30	
16	.	1N3501-54030	STEP L	1								1	
17	.	1N3501-54040	STEP R	1								1	
I 17-1	.	1N3501-54041	STEP R	1								S 1 (2)	
(A=F010151 )													
I 18	.	26018-080204	BOLT M 8X 20	2								W 20	
(A=F017334 )													
I 19	.	26367-080002	U-NUT M 8	2								W 10	
(A=F017334 )													

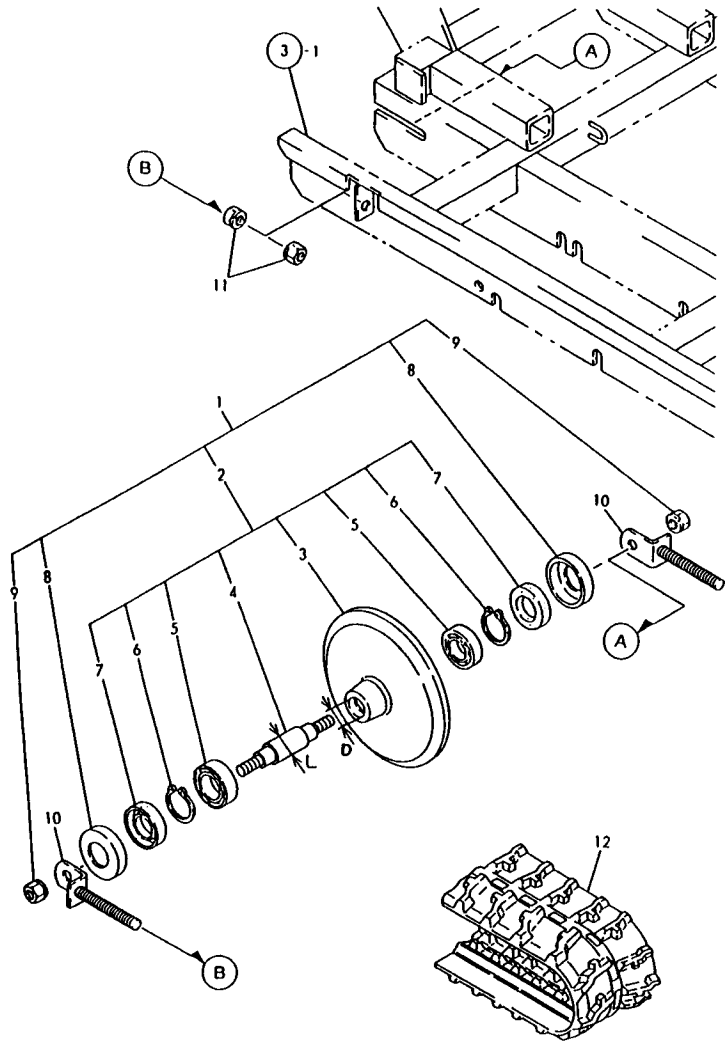
----- REMARKS -----

(1) 29" NO.8 L=273, NO.8-1 L=223" (1) REF. NO.8 HAS L=273 MM WHILE REF.

(2) 29" NO.17 L=82, NO.17-1 L=32" (1) NO.8-1 HAS L=223 MM.  
 (2) REF. NO.17 HAS L=82 MM WHILE REF.  
 (1) NO.17-1 HAS L=32 MM.

NO73086

4. IDLER



NO73087

↑-----↑  
 ↑(1) REF. NO.4 HAS L=17 MM WHILE REF.  
 ↓ NO.4-1 HAS L=15 MM.  
 ↑(2) REF. NO.3 HAS D=35 MM WHILE REF.  
 ↓ NO.3-1 HAS D=32 MM.  
 -----↓

4. IDLER

↑-----↑  
 ↑1C08↑  
 ↑(1C07)↑  
 ↑-----↑  
 NPC-2947

96.02.29

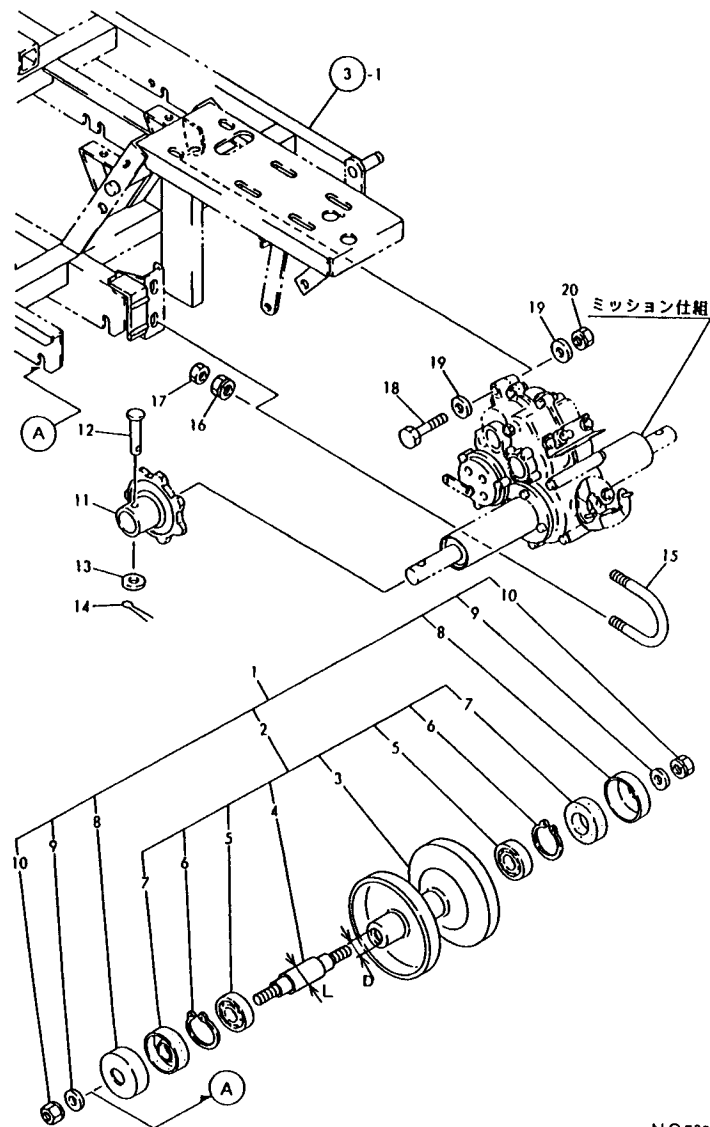
(A)=MCG91(-PQ(R (D)=  
 (B)= (E)=  
 (C)= (F)=

REF. NO.	LEV. 0	PART NO.	DESCRIPTION	-----Q'TY-----						I	P/U	A	R
				(A)	(B)	(C)	(D)	(E)	(F)				
1	.	7N1292-35010	FLOAT RING SET	2								1	
1-1	.	7N3501-35010 (A=F010101)	FLOAT RING SET	2							S	1	
2	..	7N1292-35000	FLOAT RING ASSY.	2								1	
2-1	..	7N3501-35000 (A=F010101)	FLOAT RING ASSY.	2							S	1	
3	...	1N1292-35000	RING,FLOAT	2								1	
I 3-1	...	1N3501-35000 (A=F010101)	RING,FLOAT	2							S	1 (2	
4	...	1N1292-35010	SHAFT	2								1	
I 4-1	...	1N3501-35020 (A=F010101)	SHAFT	2							S	1 (1	
5	...	24101-060034	BALL BEARING	4								1	
5-1	...	24101-060024 (A=F010101)	BALL BEARING	4							S	1	
6	...	22242-000170	CIRCLIP 17	4								10	
6-1	...	22242-000150 (A=F010101)	CIRCLIP 15	4							S	10	
7	...	24421-173508	SEAL TC17 35 08, OIL	4								1	
7-1	...	24421-153206 (A=F010101)	SEAL TC 153206,OIL	4							S	1	
8	..	1N1091-36000	COVER,OIL SEAL	4								1	
9	..	26051-120002	NUT M12	4								10	
10	.	1N1291-37000	SCREW,ADJUST	4								1	
11	.	26051-120002	NUT M12	8								10	
12	.	1N3501-37000	CRAWLER 180X60X34,RB	2								1	
12-1	.	1N3501-37010	CRAWLER 180X60X34,RB	2							R	1	
(A=F010452)													

-----REMARKS-----  
 (1) REF. NO.4 L=17,NO.4-1 L=15↓ (1) REF. NO.4 HAS L=17 MM WHILE REF.  
 (2) REF. NO.3 D=35,NO.3-1 D=32↓ (1) NO.4-1 HAS L=15 MM.  
 (2) REF. NO.3 HAS D=35 MM WHILE REF.  
 (1) NO.3-1 HAS D=32 MM.

NO73087

5. TRACK ROLLER



NO73088

- ↑-----↑
- | (1) REF. NO.4 HAS L=20 MM WHILE REF.
- | NO.4-1 HAS L=15 MM.
- | (2) REF. NO.3 HAS D=42 MM WHILE REF.
- | NO.3-1 HAS D=32 MM.

5. TRACK ROLLER

96.02.29

↑-----↑  
| 1C09 |  
| (1C07) |  
↑-----↑  
NPC-2947

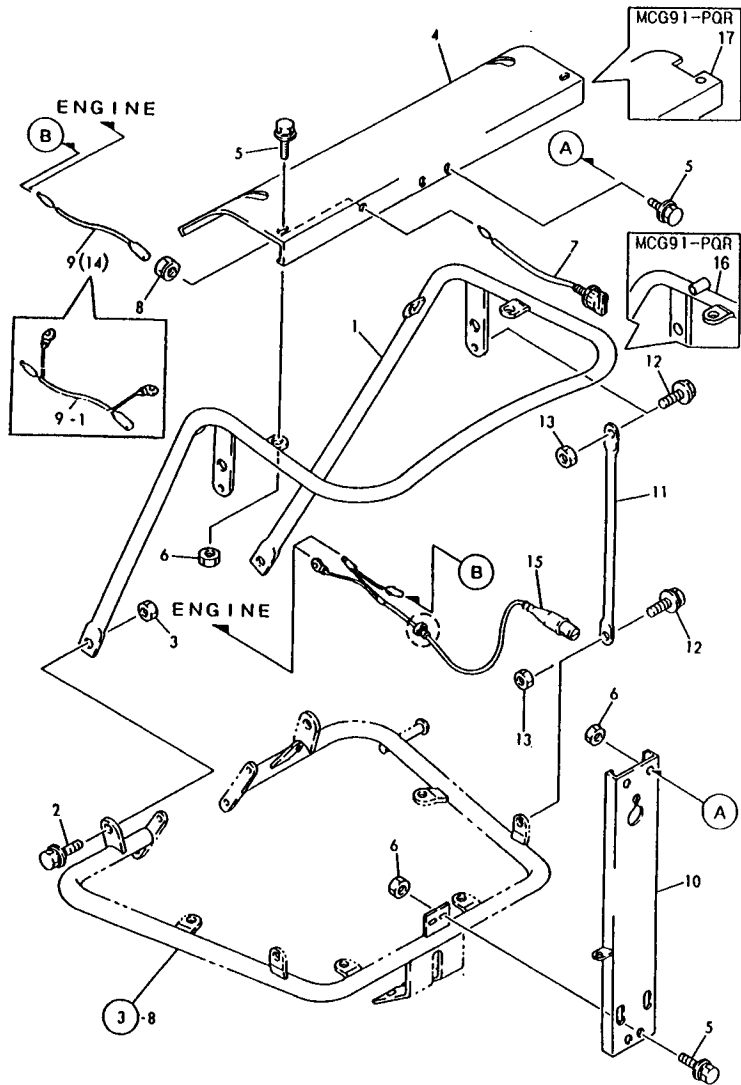
(A)=MCG91(-PQ(R (D)=  
(B)= (E)=  
(C)= (F)=

REF. NO.	LEV. 0	PART NO.	DESCRIPTION	Q'TY						I P/U A R
				(A)	(B)	(C)	(D)	(E)	(F)	
1	.	7N3510-36010	LWR.TRANK ROLLER SET	4						1
1-1	.	7N3501-36010 (A=F010101)	LWR.TRANK ROLLER SET	4						S 1
2	..	7N3510-36000	LWR.TRANK ROLLER ASY	4						1
2-1	..	7N3501-36000 (A=F010101)	LWR.TRANK ROLLER ASY	4						S 1
3	...	1N1361-36000	ROLLER,LOWER TRANK	4						1
I 3-1	...	1N3501-36010 (A=F010101)	ROLLER,LOWER TRANK	4						S 1 (2
4	...	1N3510-35010	SHAFT M12X166	4						1
I 4-1	...	1N3501-35020 (A=F010101)	SHAFT	4						S 1 (1
5	...	24101-060044	BALL BEARING 6004	8						1
5-1	...	24101-060024 (A=F010101)	BALL BEARING	8						S 1
6	...	22242-000200	CIRCLIP 20	8						10
6-1	...	22242-000170 (A=F010101)	CIRCLIP 17	8						S 10
7	...	24421-204208	SEAL TC20 42 08, OIL	8						1
7-1	...	24421-153206 (A=F010101)	SEAL TC 153206,OIL	8						S 1
8	..	1N1091-36000	COVER,OIL SEAL	8						1
9	..	22137-120000	WASHER 12,POLISHED	8						10
10	.	26051-120002	NUT M12	8						10
11	.	1N1291-35000	SPROCKET	2						1
12	.	1N1291-35020	PIN,AXLE	2						1
13	.	22137-100000	WASHER 10,POLISHED	2						10
14	.	22417-250250	COTTER PIN 2.5X25	2						10
15	.	1N1210-35100	U-BOLT	2						1
I 15-1	.	1N3501-35030	U-BOLT	2						R 1
16	.	(A=F017334) 26052-100002	NUT M10 W/SPRING	4						10
17	.	26757-100002	LOCK NUT M10	4						10
18	.	26117-100702	BOLT M10X 70 PLATED	1						10
19	.	22137-100000	WASHER 10,POLISHED	2						10
20	.	26051-100002	NUT M10	1						10

REMARKS	
(1) 29" NO.4 L=20, NO.4-1 L=15"	(1) REF. NO.4 HAS L=20 MM WHILE REF.
(2) 29" NO.3 D=42, NO.3-1 D=32"	(1) NO.4-1 HAS L=15 MM. (2) REF. NO.3 HAS D=42 MM WHILE REF. (1) NO.3-1 HAS D=32 MM.

NO73088

6. HANDLE



NO73089

-----  
 (1) EXCLUSIVE PARTS FOR MCG91-PQ  
 (2) EXCLUSIVE PARTS FOR MCG91-PQR  
 \* REF. NO.15 IS PROVIDED WITH CIRCLE-  
 MARKED PARTS WHILE REF.NO.15-1 IS  
 NOT PROVIDED WITH THE CIRCLE-MARKED  
 .

6. HANDLE

96.02.29

-----  
 (1C11)  
 (1C10)  
 -----  
 NPC-2947

(A)=MCG91(-PQ(R (D)=  
 (B)= (E)=  
 (C)= (F)=

REF. NO.	LEV. 0	PART NO.	DESCRIPTION	-----Q'TY-----						I	P/U	A	R
				(A)	(B)	(C)	(D)	(E)	(F)				
1	.	1N3501-47000	HANDLE A	1								1	
I 1-	1	1N3501-47000-1	HANDLE A	1							S	1	
(A=FD17864 )													
2	.	26018-100254	BOLT M10X 25	2								10	
3	.	26367-100002	U-NUT M10	2								10	
4	.	1N3501-58000	PANEL, CONTROL	1								1	
5	.	1N1291-58080	BOLT 6X16 W/P&SW.	8								1	
6	.	26367-060002	NUT M 6	8								30	
7	.	1A1470-40900	SWITCH, STOP	1								1	
8	.	26051-080002	NUT M 8	1								20	
9	.	1N1101-52010	WIRE, STOP LEAD	1								1	
I 9-	1	1N3501-52000	WIRE, LEAD	1							S	1	
(A=FD18159 )													
10	.	1N3501-58070	STAY, HANDLE A	1								1	
11	.	1N3501-47030	STAY	2								1	
12	.	26018-080204	BOLT M 8X 20	4								20	
13	.	26367-080002	U-NUT M 8	4								10	
14	.	1N1150-52000	WIRE 550, STOP LEAD	1								1	(1
15	.	1N1291-51030	SWITCH, SAFETY	1								1	(1
I 15-	1	1N1291-51031	SWITCH, SAFETY	1							S	1	
(A=FD11748 )													
I 16	.	1N3501-47100	HANDLE 1	1									(2
I 17	.	1N3501-58200	PANEL A, CONTROL	1									(2

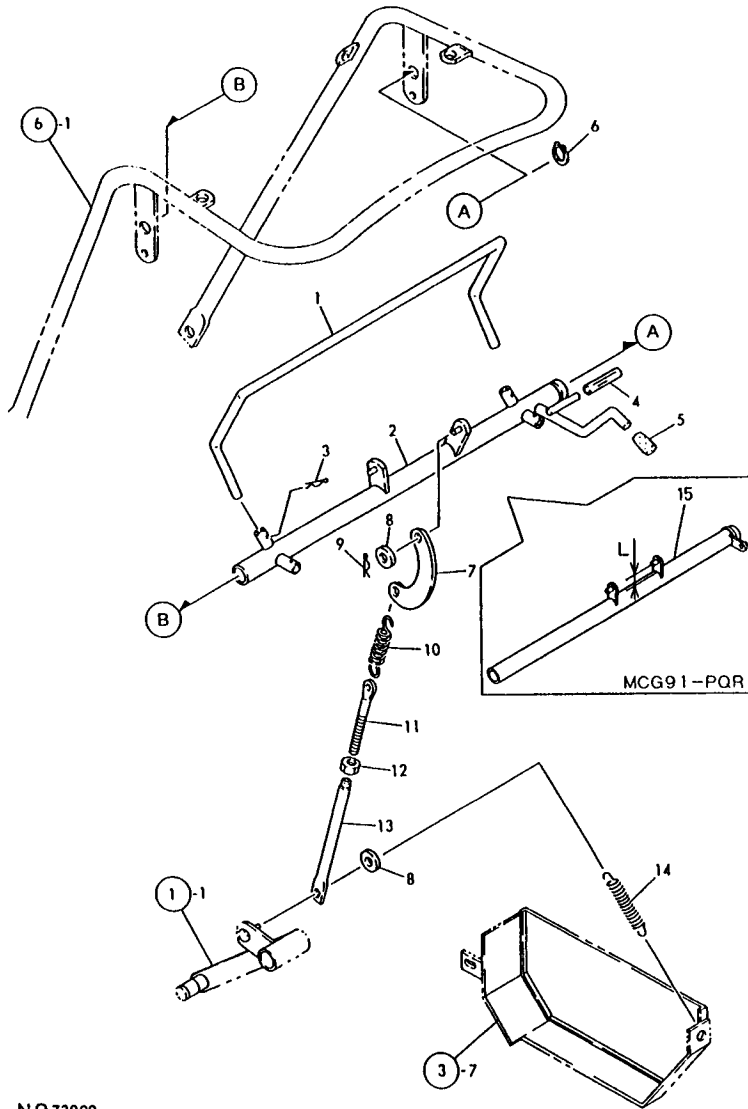
----- REMARKS -----

(1) MCG91-PQ לטעם חלקים  
 (2) MCG91-PQR לטעם חלקים  
 \* REF. NO.15 IS PROVIDED WITH CIRCLE-MARKED PARTS WHILE REF.NO.15-1 IS NOT PROVIDED WITH THE CIRCLE-MARKED PARTS

(1) EXCLUSIVE PARTS FOR MCG91-PQ  
 (2) EXCLUSIVE PARTS FOR MCG91-PQR  
 \* REF. NO.15 IS PROVIDED WITH CIRCLE-MARKED PARTS WHILE REF.NO.15-1 IS NOT PROVIDED WITH THE CIRCLE-MARKED PARTS

NO73089

7. TRAVEL LEVER



NO73090

(1) EXCLUSIVE PART FOR MCG91-PQR  
 (2) REF. NO.15 HAS L=23 MM WHILE REF.  
 NO.15-1 HAS L=30 MM.

↑-----↑  
 I 1C12 I  
 I (1C10) I  
 ↑-----↑  
 NPC-2947

7. TRAVEL LEVER

96.02.29

(A)=MCG91(-PQ(R (D)=  
 (B)= (E)=  
 (C)= (F)=

REF. NO.	LEV. 0	PART NO.	DESCRIPTION	Q'TY						I	P/U	A	R
				(A)	(B)	(C)	(D)	(E)	(F)				
1	.	1N3501-42020	LEVER, CLUTCH BRAKE	1								1	
2	.	1N3501-42000	LINK, CLUTCH BRAKE	1								1	
3	.	22360-160000	SNAP PIN 16	2								10	
4	.	1N1277-42270	HOSE, VINYL	1								1	
5	.	1N3500-44000	GRIP, RED	1								1	
6	.	22242-000250	CIRCLIP 25S	1								10	
7	.	1N1240-42050	LINK, CRESCENT	1								1	
8	.	22137-080000	WASHER 8, POLISHED	2								10	
9	.	22360-080000	SNAP PIN 8	1								10	
10	.	1N1210-53030	SPRING 21.5X78, TENS.	1								1	
11	.	1N1360-22090	SCREW 8X94, ADJUST	1								1	
12	.	26757-080002	LOCK NUT M 8 PLATED	1								10	
13	.	1N1480-42170	ROD	1								1	
14	.	1N1190-45000	SPRING 11X72.5, TENS.	1								1	
I 15	.	1N3501-42090	LINK, CLUTCH BRAKE (A	1								1 (1	
I 15-1	.	1N3501-42091	LINK A, CLUTCH BRAKE (A=FD18670 )	1							S	(2	

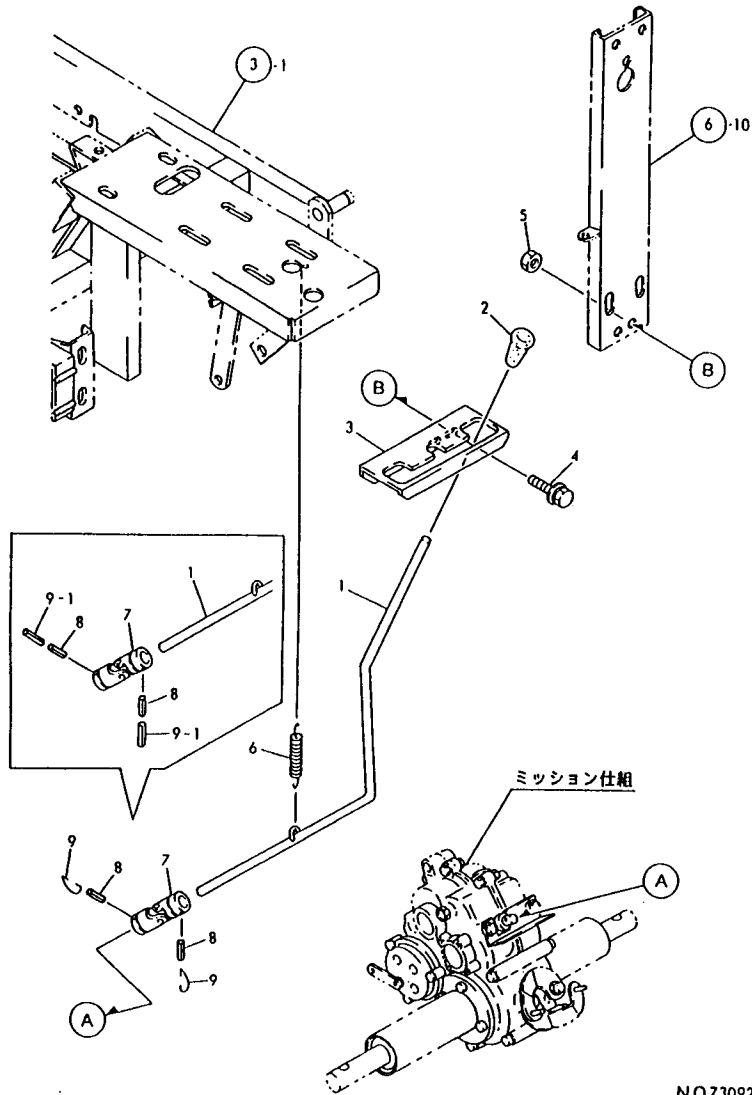
REMARKS

(1) MCG91-PQR  
 (2) REF. NO.15 L=23, NO.15-1 L=30  
 (1) EXCLUSIVE PART FOR MCG91-PQR  
 (2) REF. NO.15 HAS L=23 MM WHILE REF.  
 NO.15-1 HAS L=30 MM.

NO73090



9. MAIN CHANGE LEVER



NO73092

+-----+  
| 1C14 |  
| (1C10) |  
+-----+  
NPC-2947

9. MAIN CHANGE LEVER

96.02.29

(A)=MCG91(-PQ(R (D)=  
(B)= (E)=  
(C)= (F)=

REF. NO.	LEV. 0	PART NO.	DESCRIPTION	-----Q'TY-----						I	P/U	A	R
				(A)	(B)	(C)	(D)	(E)	(F)				
1	.	1N3500-41010	LEVER A,CHANGE	1								1	
2	.	1N1101-44010	GRIP 10,CLUTCH	1								1	
3	.	1N3501-41000	GUIDE A,CHANGE	1								1	
4	.	1N1291-58080	BOLT 6X16 W/P&SW.	2								1	
5	.	26367-060002	NUT M 6	2								30	
6	.	1N1366-53000	SPRING 12.5X34.5,TNS	1								1	
7	.	1N3500-41000	JOINT 12X14,UNIVERSL	1								1	
8	.	22351-050030	SPRING PIN 5X30	2								10	
9	.	1N1185-41010	CIRCLIP,CHANGE	2								1	
9- 1	.	22351-030030 (A=FO11135 )	SPRING PIN 3X30	2							S	10	





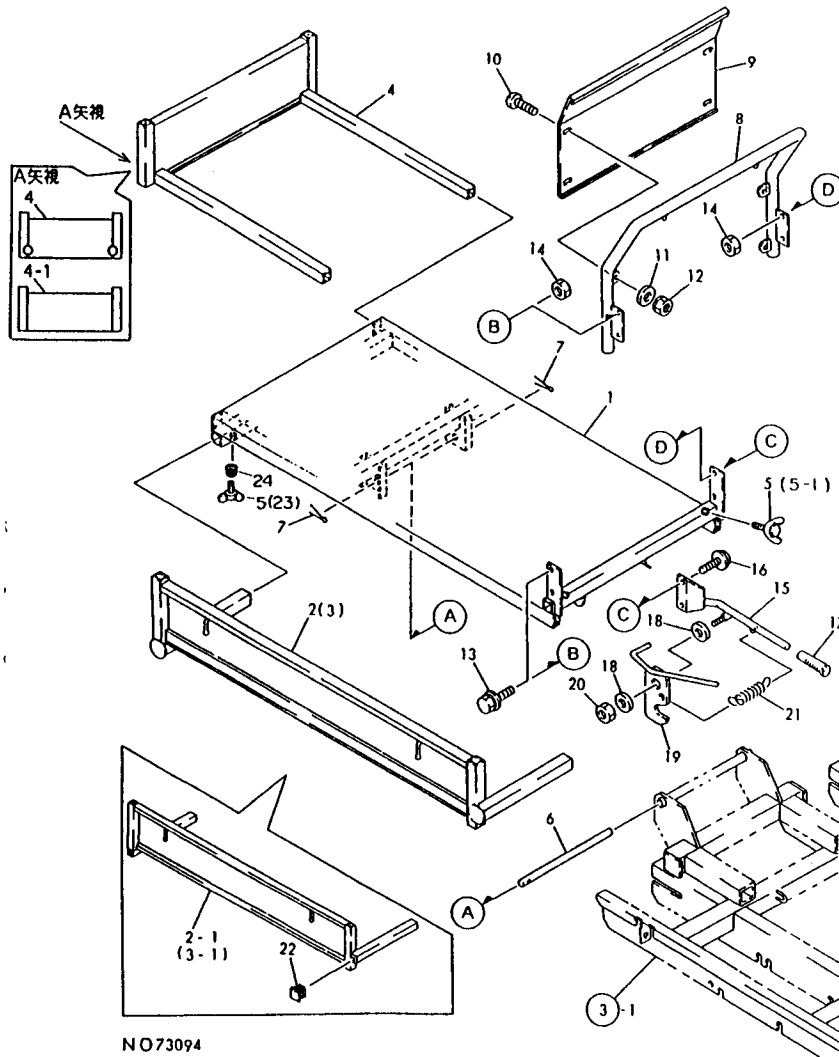
11. PLATFORM CARRIER

+-----+  
I 1D02 I  
I (1D01) I  
+-----+  
NPC-2947

11. PLATFORM CARRIER

96.02.29

(A)=MCG91(-PQ(R (D)=  
(B)= (E)=  
(C)= (F)=

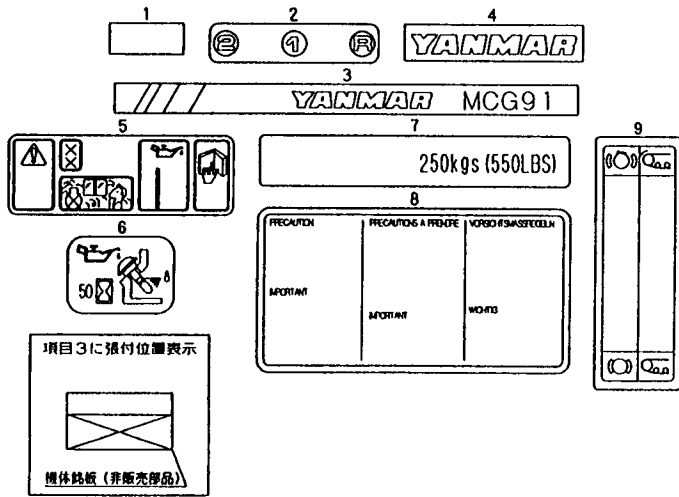


NO73094

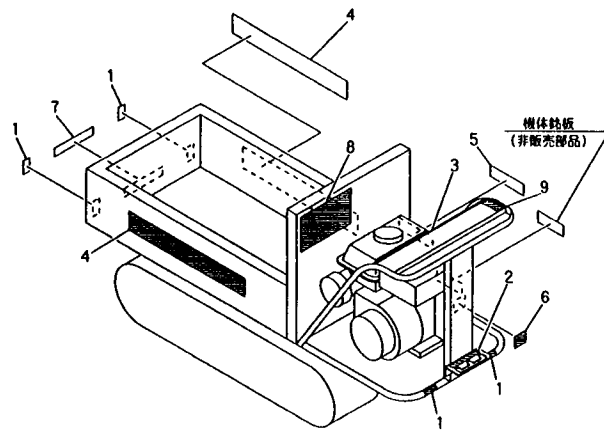
REF. NO.	LEV. 0	PART NO.	DESCRIPTION	-----Q'TY-----						I	P	U	A	R
				(A)	(B)	(C)	(D)	(E)	(F)					
1	.	1N3501-64000	CARRIER, PLATFORM	1										1
2	.	1N3500-65001	PLATE L, SIDE	1										1
2- 1	.	1N3500-65002	PLATE L, SIDE	1							S			1
(A=F010452 )														
3	.	1N3500-65011	BOARD R, SIDE	1										1
3- 1	.	1N3500-65012	SIDE PLATE R	1							S			1
(A=F010452 )														
4	.	1N1291-65240	PLATE, FRONT	1										1
4- 1	.	1N1291-65241	PLATE, FRONT	1							S			1
(A=F010452 )														
5	.	26647-100202	WING BOLT M10X20	6										5
I 5- 1	.	26647-100202	WING BOLT M10X20	2								K		5
(A=FXXXXXX )														
6	.	1N3501-64020	PIN, FULCRUM	1										1
7	.	22417-400300	COTTER PIN 4.0X30	2										10
8	.	1N3501-66000	PLATE, BACK	1										1
9	.	1N3501-66020	PLATE, BACK	1										1
10	.	26557-060162	SCREW M 6X 16	4										10
11	.	22137-060000	WASHER 6, POLISHED	4										10
12	.	26051-060002	NUT M 6	4										30
13	.	26018-080204	BOLT M 8X 20	2										20
14	.	26367-080002	U-NUT M 8	4										10
15	.	1N3501-64010	LEVER, DUNP	1										1
16	.	26018-080254	BOLT M 8X 25	2										10
17	.	1N1101-44000	GRIP, SIDE CLUTCH	1										1
18	.	22137-120000	WASHER 12, POLISHED	2										10
19	.	1N3500-64110	LEVER, LOCK	1										1
20	.	26347-120002	U-NUT M12	1										10
21	.	1N1151-53000	SPRING 12.5X54, TENS.	1										1
22	.	1N1520-53020	PLUG 25J, SQUARE OIL	4								W		1
(A=F010452 )														
I 23	.	26647-100302	BOLT 10X30, WING	4									W	10
(A=FXXXXXX )														
I 24	.	1N1151-53020	SPRING 10.5X25, COMPR	4									W	1
(A=FXXXXXX )														

NO73094

12. LABELS



項目3に預付位置表示  
機体銘板 (非販売部品)



NO73095

-----  
 (1) GROUP NO.12 EXCLUSIVE PARTS  
 1 FOR MCG91-PQ  
 -----

-----  
 1004  
 (1003)  
 -----  
 NPC-2947

12. LABELS

96.02.29

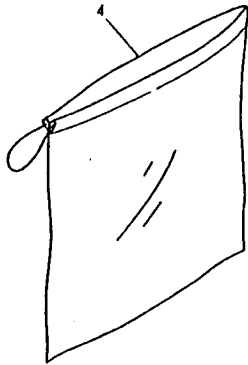
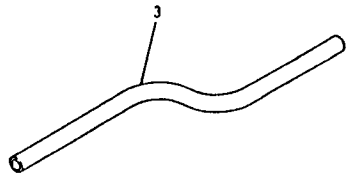
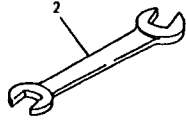
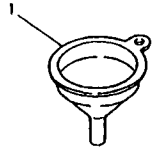
(A)=MCG91(-PQ(R (D)=  
 (B)= (E)=  
 (C)= (F)=

REF. NO.	LEV. 0	PART NO.	DESCRIPTION	-----Q'TY-----						I P/U A R
				(A)	(B)	(C)	(D)	(E)	(F)	
1	.	1N1070-93050	TAPE, REFLECTIVE	4						4
2	.	1N3500-93040	LABEL, CHANGE	1						1
3	.	1N3501-93000	NAMER MCG91, MAIN	1						1
4	.	1N1313-93030	NAMER, SIDE	2						1
5	.	1N1362-93060	LABEL, PQ-1	1						
6	.	1N1362-93070	LABEL, PQ-2	1						
7	.	1N1362-93100	LABEL, PQ-5	1						
8	.	1N1362-93140	LABEL, PQ-9	1						
9	.	1N1362-93250	LABEL, PQ-20	1						1

----- REMARKS -----  
 (1) GROUP NO.12) MCG91-PQに付随する部品 (1) GROUP NO.12 EXCLUSIVE PARTS  
 1 FOR MCG91-PQ

NO73095

13. TOOLS & ACCESSORIES



NO 73096

↑-----↑  
 | 1005 |  
 | (1003) |  
 ↓-----↓  
 NPC-2947

13. TOOLS & ACCESSORIES

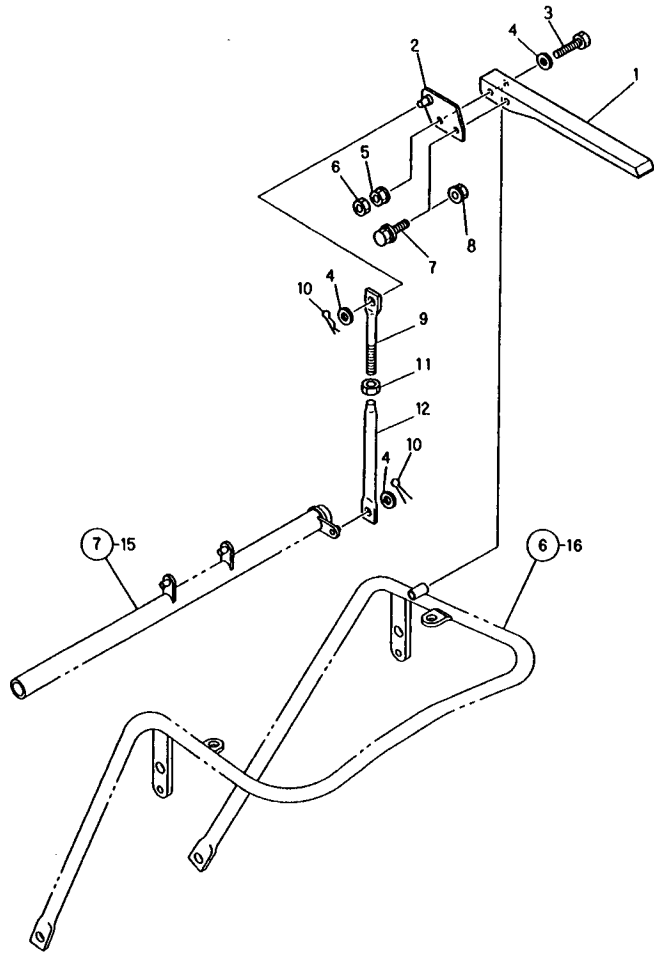
96.02.29

(A)=MCG91(-PQ(R (D)=  
 (B)= (E)=  
 (C)= (F)=

REF. NO.	LEV. 0	PART NO.	DESCRIPTION	-----Q'TY-----						I P/U A R
				(A)	(B)	(C)	(D)	(E)	(F)	
1	.	1N1070-91010	FUNNEL	1						1
2	.	1N1070-91050	WRENCH 17X19	1						1
3	.	1N1070-91020	HOSE	1						1
4	.	1N1070-91090	BAG, TOOL	1						1

NO73096

14 . DEADMAN LEVER(ADD. ITEM



N112620

-----  
 I\* GROUP NO.14 EXCLUSIVE PARTS  
 I FOR MCG91-PQR  
 -----

+-----+  
 I 1C16 I  
 I(1C10) I  
 +-----+  
 NPC-2947

14 . DEADMAN LEVER(ADD. ITEM

96.02.29

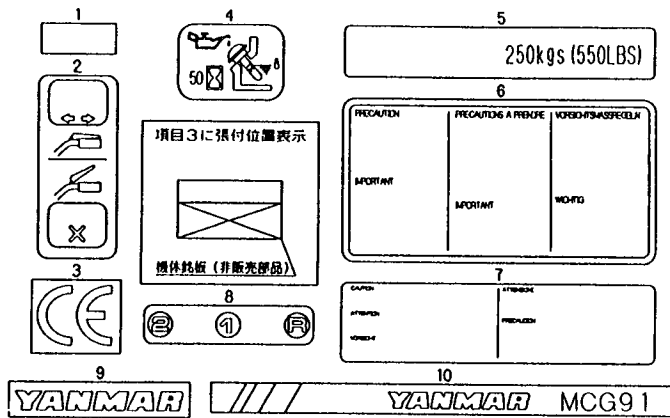
(A)=MCG91(-PQ(R (D)=  
 (B)= (E)=  
 (C)= (F)=

REF. NO.	LEV. 0	PART NO.	DESCRIPTION	-----Q'TY-----						I	P/U	A	R
				(A)	(B)	(C)	(D)	(E)	(F)				
1	.	1N1723-31360	LEVER, DEADMAN	1								1	
2	.	1N3501-42100	BRACKET A, DEADMN.LVR	1									
3	.	26116-080552	BOLT M 8X 55 PLATED	1								10	
4	.	22137-080000	WASHER 8, POLISHED	3								10	
5	.	26347-080002	U-NUT M 8	1								10	
6	.	26757-080002	LOCK NUT M 8 PLATED	1								10	
7	.	26018-080204	BOLT M 8X 20	1								20	
8	.	26367-080002	U-NUT M 8	1								10	
9	.	1N1360-22090	SCREW 8X94, ADJUST	1								1	
I 9- 1	.	1N3506-42160 (A=FO19016 )	SCREW M8X60, ADJUST	1							S	1	
10	.	22360-080000	SNAP PIN 8	2								10	
11	.	26757-080002	LOCK NUT M 8 PLATED	1								10	
12	.	1N1270-22132	ROD B, CLUTCH CONNECT	1								1	

----- REMARKS -----  
 \* GROUP NO.14) MCG91-PQR  
 I\* GROUP NO.14 EXCLUSIVE PARTS  
 I FOR MCG91-PQR

N112620

15. LABELS (ADD. ITEM)



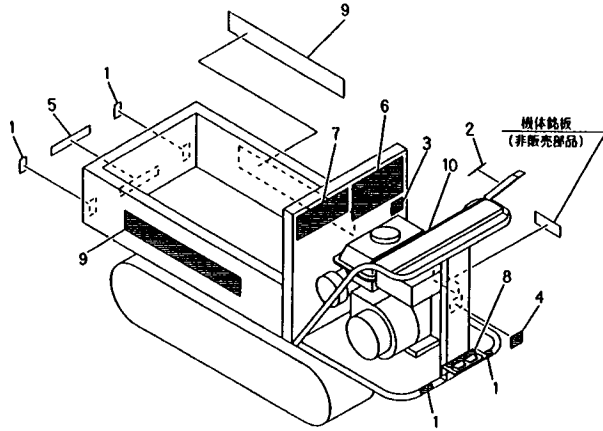
↑-----↑  
 | 1006 |  
 | (1003) |  
 ↑-----↑  
 NPC-2947

15. LABELS (ADD. ITEM)

96.02.29

(A)=MCG91(-PQR) (D)=  
 (B)= (E)=  
 (C)= (F)=

REF. NO.	LEV. 0	PART NO.	DESCRIPTION	-----Q'TY-----						I	P	U	A	R
				(A)	(B)	(C)	(D)	(E)	(F)					
1	.	1N1070-93050	TAPE, REFLECTIVE	4										4
2	.	1N3507-93050	DECAL, HYD. CONTROL	1										
3	.	1N3507-93060	DECAL, HYD. CONTROL	1										
4	.	1N1362-93070	LABEL, PQ-2	1										
5	.	1N1362-93100	LABEL, PQ-5	1										
6	.	1N1362-93140	LABEL, PQ-9	1										
7	.	1N3507-93090	DECAL, HYD. CONTROL	1										
8	.	1N3500-93040	LABEL, CHANGE	1										1
9	.	1N1313-93030	NAMER, SIDE	2										1
10	.	1N3501-93000	NAMER MCG91, MAIN	1										1



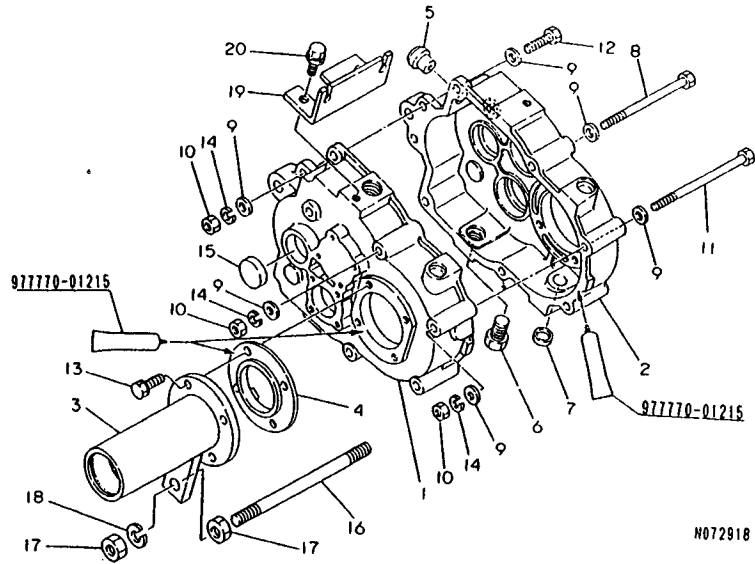
N112621

↑-----↑  
 | (1) GROUP NO.15 EXCLUSIVE PARTS |  
 | FOR MCG91-PQR |  
 ↓-----↓

REMARKS  
 (1) GROUP NO.15 EXCLUSIVE PARTS FOR MCG91-PQR

N112621

1. TRANSMISSION CASE



-----  
 \*P/#7N3501-20000 TRANSMISSION ASY.  
 (1) REF. NO.2 IS A DRAIN PLUG WITH  
 HOLE OF M14 WHILE REF. NO.2-1 IS  
 A DRAIN PLUG PT1/4.

1. TRANSMISSION CASE

96.02.29

-----  
 I 1E03 I  
 I (1E02) I  
 -----  
 NPC-2554

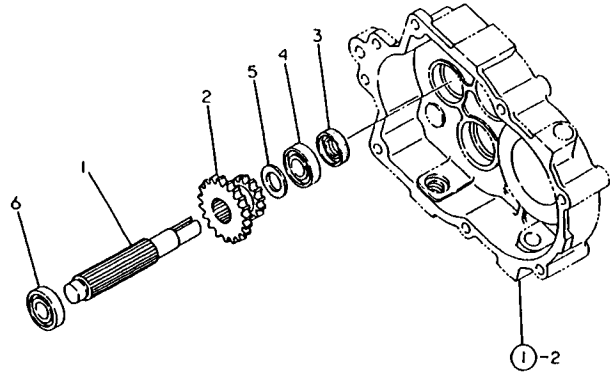
(A)=FT25-7FA (D)=  
 (B)= (E)=  
 (C)= (F)=

REF. NO.	LEV. 0	PART NO.	DESCRIPTION	-----Q'TY-----						I	P	U	A	R
				(A)	(B)	(C)	(D)	(E)	(F)					
1	.	1N3500-24000	CASE L, TRANSMISSION	1										1
2	.	1N3500-24010	CASE R, TRANSMISSION	1										1
I 2-1	.	1N3500-24011	CASE R, TRANSMISSION	1							S			(1
(A=M910418 )														
3	.	1N1296-24001	HOLDER, AXLE	2										1
4	.	1N1296-24013	PAWL, CLUTCH	2										1
5	.	1N1291-24070	PLUG, HOLED OIL	1										1
6	.	1N1291-24040	PLUG M14, DRAIN	1										1
I 6-1	.	1N1291-24230	PLUG PT1/4	1							S			
(A=M910418 )														
7	.	1N1430-24080	CAP, SEAL	2										1
8	.	26117-081102	BOLT M 8X110 PLATED	2										10
9	.	22137-080000	WASHER 8, POLISHED	16										10
10	.	26717-080002	NUT 8	8										10
11	.	26117-081202	BOLT M 8X120 PLATED	2										10
12	.	26117-080302	BOLT M 8X 30	4										10
13	.	26016-080254	BOLT M 8X 25	8										20
14	.	22217-080000	SPRING WASHER 8	8										10
15	.	1N1430-24000	PLUG, BLIND	1										1
16	.	1N1296-24020	SCREW M12X180	1										1
17	.	26717-120002	NUT M12	4										10
18	.	22217-120000	WASHER 12, SPRING	2										10
19	.	1N3500-24030	BRACKET, OUTER	1										1
20	.	26018-080164	BOLT M 8X 16	2										20

----- REMARKS -----  
 \*7N3501-20000 ミツヨコ(シ) \*P/#7N3501-20000 TRANSMISSION ASY.  
 (1)ミツヨコNO.2はM14の穴の排水プラグ、NO.2-1はPT1/4の排水プラグ。(1) REF. NO.2 IS A DRAIN PLUG WITH HOLE OF M14 WHILE REF. NO.2-1 IS A DRAIN PLUG PT1/4.

N072918

2. MAIN SHAFT



N072919

+-----+  
 | 1E04 |  
 | (1E02) |  
 +-----+  
 NPC-2554

2. MAIN SHAFT

96.02.29

(A)=FT25-7FA (D)=  
 (B)= (E)=  
 (C)= (F)=

REF. NO.	LEV. 0	PART NO.	DESCRIPTION	-----Q'TY-----						I P/U A R
				(A)	(B)	(C)	(D)	(E)	(F)	
1	.	1N1291-25310	SHAFT KW2, INPUT	1						1
2	.	1N1291-25010	GEAR 16-27	1						1
3	.	24421-173007	SEAL TC17 30 07, OIL	1						1
4	.	24101-060034	BALL BEARING	1						1
5	.	1N1430-25090	COLLAR	1						1
6	.	24101-062024	BALL BEARING	1						1



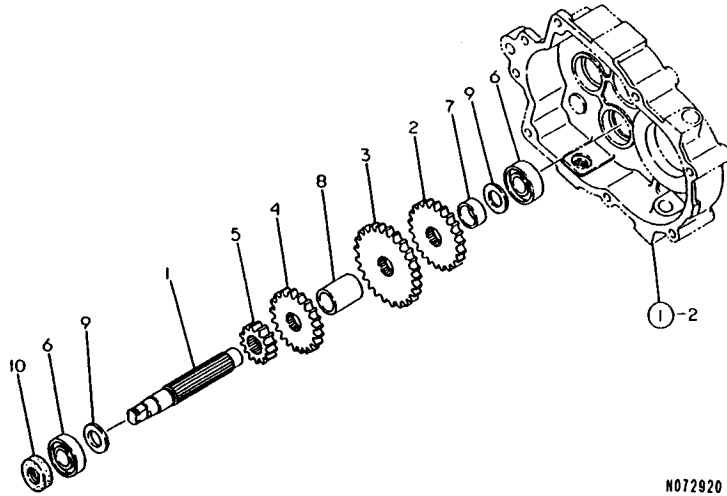
3. TRANSMISSION SHAFT B

+-----+  
 | 1E05 |  
 | (1E02) |  
 +-----+  
 NPC-2554

3. TRANSMISSION SHAFT B

96.02.29

(A)=FT25-7FA (D)=  
 (B)= (E)=  
 (C)= (F)=

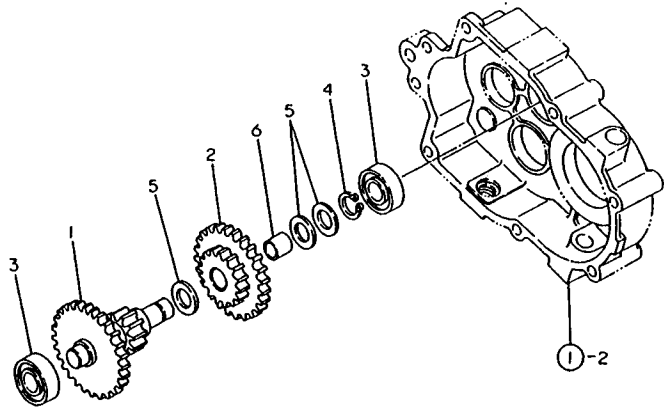


N072920

REF. NO.	LEV. 0	PART NO.	DESCRIPTION	-----Q'TY-----						I P/U A R
				(A)	(B)	(C)	(D)	(E)	(F)	
1	.	1N1296-25000	SHAFT, 2ND	1						1
2	.	1N1291-25340	GEAR 28	1						1
3	.	1N1296-25020	GEAR 41	1						1
4	.	1N1296-25030	GEAR 30	1						1
5	.	1N1291-25040	GEAR 16	1						1
6	.	24101-062034	BALL BEARING	2						1
7	.	1N1291-25050	COLLAR 20.5X26X11	1						1
8	.	1N1291-25060	COLLAR 20.2X27.2X33	1						1
9	.	1N1430-25090	COLLAR	2						1
10	.	24421-173507	SEAL TC17 35 07, OIL	1						1

N072920

4. SIDE CLUTCH SHAFT



N072921

+-----+  
 | 1E06 |  
 | (1E02) |  
 +-----+  
 NPC-2554

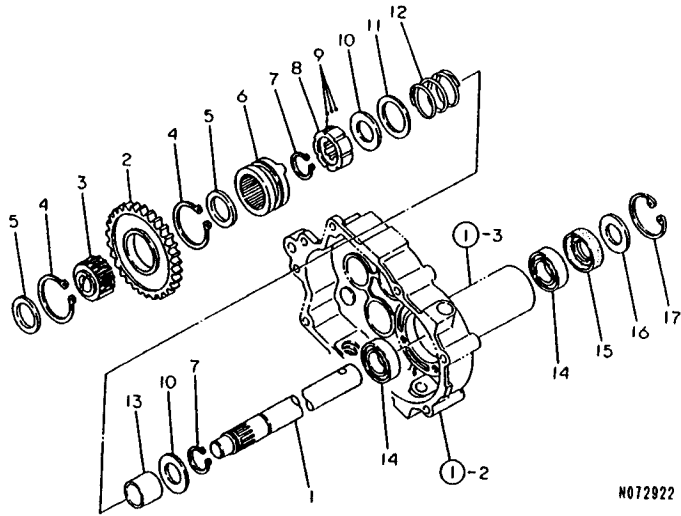
4. SIDE CLUTCH SHAFT

96.02.29

(A)=FT25-7FA (D)=  
 (B)= (E)=  
 (C)= (F)=

REF. NO.	LEV. 0	PART NO.	DESCRIPTION	-----Q'TY-----						I	P/U	A	R
				(A)	(B)	(C)	(D)	(E)	(F)				
1	.	1N1291-25070	SHAFT COMP., 3RD	1								1	
2	.	1N1291-25350	GEAR 26/41T	1								1	
3	.	24101-062034	BALL BEARING	2								1	
4	.	22242-000170	CIRCLIP 17	1								10	
5	.	1N1430-25090	COLLAR	3								1	
6	.	1N1291-25080	BUSH 1715	1								1	

5. AXLE



N072922

+-----+  
 | 1E07 |  
 | (1E02) |  
 +-----+  
 NPC-2554

5. AXLE

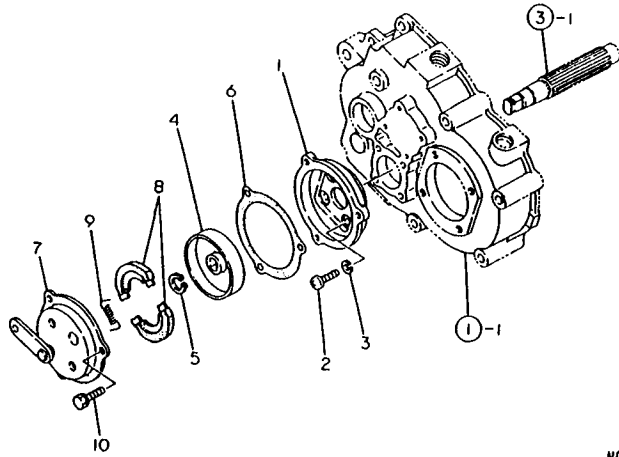
96.02.29

(A)=FT25-7FA (D)=  
 (B)= (E)=  
 (C)= (F)=

REF. NO.	LEV. 0	PART NO.	DESCRIPTION	-----Q'TY-----						I	P/U	A	R
				(A)	(B)	(C)	(D)	(E)	(F)				
1	.	1N1291-25090	AXLE	2								1	
2	.	1N1291-25100	GEAR 44	1								1	
3	.	1N1291-25110	GEAR 28, CLUTCH	1								1	
4	.	22242-000500	CIRCLIP 50	2								10	
5	.	1N1291-25120	PLATE, BALL SUPPORT'G	2								1	
6	.	1N1291-25134	GEAR 28, SIDE CLUTCH	2								1	
7	.	22242-000250	CIRCLIP 25S	4								10	
8	.	1N1291-25140	BOSS, DRIVE	2								1	
9	.	1N1291-25150	BALL 4, STEEL	42								1	
10	.	1N1291-25160	LINER 2.0X25.5X46	4								1	
11	.	1N1291-25170	LINER 2.0X35.5X50	2								1	
12	.	1N1291-25180	SPRING, CLUTCH	2								1	
13	.	1N1291-25190	COLLAR 25.2X31.8X27.	2								1	
14	.	24101-060054	BALL BEARING	4								1	
15	.	24421-254708	SEAL TC25 47 08, OIL	2								1	
16	.	1N1291-25200	COVER, OIL SEAL	2								1	
17	.	22252-000470	CIRCLIP 47	2								10	

N072922

6. BRAKE



N072923

↑-----↑  
 | 1E08 |  
 | (1E02) |  
 ↑-----↑  
 NPC-2554

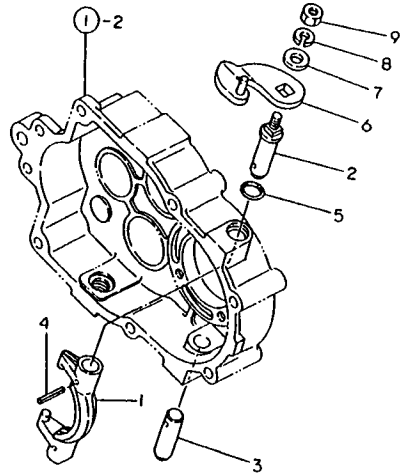
6. BRAKE

96.02.29

(A)=FT25-7FA (D)=  
 (B)= (E)=  
 (C)= (F)=

REF. NO.	LEV. 0	PART NO.	DESCRIPTION	-----Q'TY-----						I P/U A R
				(A)	(B)	(C)	(D)	(E)	(F)	
1	.	1N1296-25040	MOUNT, BRAKE	1						1
2	.	26557-060162	SCREW M 6X 16	4						10
3	.	22217-060000	SPRING WASHER 6	4						10
4	.	1N1291-25220	DRUM, BRAKE	1						1
5	.	22242-000140	CIRCLIP 14	1						10
6	.	1N1291-25230	PACKING, BRAKE PLATE	1						1
7	.	1N1291-25240	PLATE COMP., BRAKE	1						1
8	.	1N1291-25250	SHOE, BRAKE	2						1
9	.	1N1291-25260	SPRING, BRAKE SHOE	2						1
10	.	26016-060124	BOLT 6X12 W/L.W.	3						30

7. SIDE CLUTCH



N072924

+-----+  
 | 1E09 |  
 | (1E02) |  
 +-----+  
 NPC-2554

7. SIDE CLUTCH

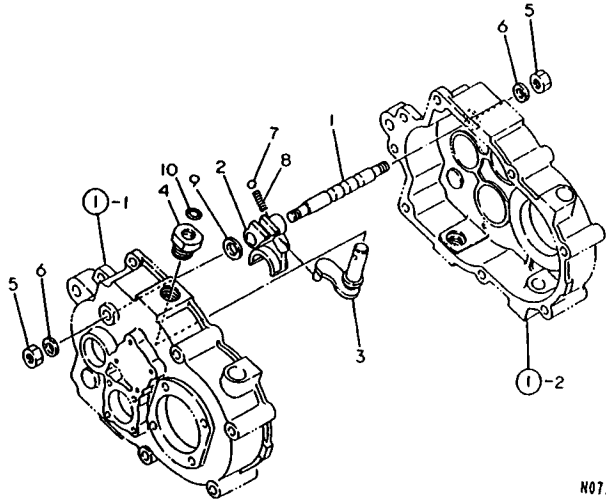
96.02.29

(A)=FT25-7FA (D)=  
 (B)= (E)=  
 (C)= (F)=

REF. NO.	LEV. 0	PART NO.	DESCRIPTION	-----Q'TY-----						I	P	U	A	R
				(A)	(B)	(C)	(D)	(E)	(F)					
1	.	1N1296-25050	SHIFTER, SIDE CLUTCH	2										1
2	.	1N1296-25060	PIN, SHIFT LEVER UPPR	2										1
3	.	1N1296-25070	PIN, SHIFT LEVER LOWR	2										1
4	.	22351-050025	SPRING PIN 5X25	4										10
5	.	24311-000140	O-RING 1A P-14.0	2										10
6	.	1N1291-25300	LEVER, SIDE CLUTCH	2										1
7	.	22137-080000	WASHER 8, POLISHED	2										10
8	.	22217-080000	SPRING WASHER 8	2										10
9	.	26717-080002	NUT 8	2										10

N072924

8. MAIN CHANGE



N072925

↑-----↑  
 | 1E10 |  
 | (1E02) |  
 ↑-----↑  
 NPC-2554

8. MAIN CHANGE

96.02.29

(A)=FT25-7FA (D)=  
 (B)= (E)=  
 (C)= (F)=

REF. NO.	LEV. 0	PART NO.	DESCRIPTION	-----Q'TY-----						I P/U A R
				(A)	(B)	(C)	(D)	(E)	(F)	
1	.	1N1291-26000	ROD, SHIFTER	1						1
2	.	1N1291-26010	SHIFTER, GEAR	1						1
3	.	1N1291-26020	LEVER, SHIFT	1						1
4	.	1N1291-26030	GUIDE, SHIFT LEVER	1						1
5	.	26717-100002	NUT M10	2						10
6	.	1N1430-26030	WASHER, SEAL	2						1
7	.	1N1150-25010	BALL 8, STEEL	1						1
8	.	1N1291-26040	SPRING, FORK	1						1
9	.	1N1291-26050	LINER 2.3X22X13.5	1						1
10	.	24311-000140	O-RING 1A P-14.0	1						10

N072925

PART NO.	DESCRIPTION	CATALOG NO.	GRP. NO.	REF. NO.	LOC. NO.	I	PART NO.	DESCRIPTION	CATALOG NO.	GRP. NO.	REF. NO.	LOC. NO.
1A1470-40900	SWITCH, STOP	NPC-2947	6	7	1C11	I	1N1291-25220	DRUM, BRAKE	NPC-2554	6	4	1E08
1E4490-51700	LEVER CMP., SD. CLUTCH	NPC-2947	10	1	1C15	I	1N1291-25230	PACKING, BRAKE PLATE	NPC-2554	6	6	1E08
1E4490-51730	LEVER R CMP, SD. CLTCH	NPC-2947	10	5	1C15	I	1N1291-25240	PLATE COMP., BRAKE	NPC-2554	6	7	1E08
1E4490-51760	LEVER, ACCELERATOR	NPC-2947	10	6	1C15	I	1N1291-25250	SHOE, BRAKE	NPC-2554	6	8	1E08
1N1070-91010	FUNNEL	NPC-2947	13	1	1D05	I	1N1291-25260	SPRING, BRAKE SHOE	NPC-2554	6	9	1E08
1N1070-91020	HOSE	NPC-2947	13	3	1D05	I	1N1291-25300	LEVER, SIDE CLUTCH	NPC-2554	7	6	1E09
1N1070-91050	WRENCH 17X19	NPC-2947	13	2	1D05	I	1N1291-25310	SHAFT KW2, INPUT	NPC-2554	2	1	1E04
1N1070-91090	BAG, TOOL	NPC-2947	13	4	1D05	I	1N1291-25340	GEAR 28	NPC-2554	3	2	1E05
1N1070-93050	TAPE, REFLECTIVE	NPC-2947	12	1	1D04	I	1N1291-25350	GEAR 26/41T	NPC-2554	4	2	1E06
1N1091-36000	COVER, OIL SEAL	NPC-2947	4	8	1C08	I	1N1291-26000	ROD, SHIFTER	NPC-2554	8	1	1E10
			5	8	1C09	I	1N1291-26010	SHIFTER, GEAR	NPC-2554	8	2	1E10
							1N1291-26020	LEVER, SHIFT	NPC-2554	8	3	1E10
1N1101-44000	GRIP, SIDE CLUTCH	NPC-2947	11	17	1D02	I	1N1291-26030	GUIDE, SHIFT LEVER	NPC-2554	8	4	1E10
1N1101-44010	GRIP 10, CLUTCH	NPC-2947	9	2	1C14	I	1N1291-26040	SPRING, FORK	NPC-2554	8	8	1E10
1N1101-44040	RUBBER, STOPPER	NPC-2947	3	2	1C06	I	1N1291-26050	LINER 2.3X22X13.5	NPC-2554	8	9	1E10
				2-	1C06	I	1N1291-35000	SPROCKET	NPC-2947	5	11	1C09
1N1101-52010	WIRE, STOP LEAD	NPC-2947	6	9	1C11	I	1N1291-35020	PIN, AXLE	NPC-2947	5	12	1C09
1N1150-25010	BALL 8, STEEL	NPC-2554	8	7	1E10	I	1N1291-37000	SCREW, ADJUST	NPC-2947	4	10	1C08
1N1150-52000	WIRE 550, STOP LEAD	NPC-2947	6	14	1C11	I	1N1291-51000	WIRE, THROTTLE	NPC-2947	10	8	1C15
1N1151-53000	SPRING 12.5X54, TENS.	NPC-2947	11	21	1D02	I	1N1291-51030	SWITCH, SAFETY	NPC-2947	6	15	1C11
1N1151-53020	SPRING 10.5X25, COMPR	NPC-2947	11	24	1D02	I	1N1291-51031	SWITCH, SAFETY	NPC-2947	6	15-	1C11
1N1185-41010	CIRCLIP, CHANGE	NPC-2947	9	9	1C14	I	1N1291-58080	BOLT 6X16 W/P&SW.	NPC-2947	3	14	1C06
1N1190-45000	SPRING 11X72.5, TENS.	NPC-2947	7	14	1C12	I				6	5	1C11
1N1210-35100	U-BOLT	NPC-2947	5	15	1C09	I				9	4	1C14
1N1210-53030	SPRING 21.5X78, TENS.	NPC-2947	7	10	1C12	I	1N1291-65240	PLATE, FRONT	NPC-2947	11	4	1D02
1N1215-51000	PIN 6X16, RIVET	NPC-2947	8	5	1C13	I	1N1291-65241	PLATE, FRONT	NPC-2947	11	4-	1D02
1N1240-21040	WASHER	NPC-2947	2	9	1C04	I	1N1292-35000	RING, FLOAT	NPC-2947	4	3	1C08
1N1240-42050	LINK, CRESCENT	NPC-2947	7	7	1C12	I	1N1292-35010	SHAFT	NPC-2947	4	4	1C08
			8	1	1C13	I	1N1293-53000	SPRING, BRAKE RETURN	NPC-2947	8	11	1C13
1N1270-22132	ROD B, CLUTCH CONNECT	NPC-2947	14	12	1C16	I	1N1296-24001	HOLDER, AXLE	NPC-2554	1	3	1E03
1N1277-42270	HOSE, VINYL	NPC-2947	7	4	1C12	I	1N1296-24013	PAWL, CLUTCH	NPC-2554	1	4	1E03
1N1285-42160	SPRING 11X65, COMPRES	NPC-2947	10	11	1C15	I	1N1296-24020	SCREW M12X180	NPC-2554	1	16	1E03
1N1291-22020	GUARD 40, BELT	NPC-2947	2	4	1C04	I	1N1296-25000	SHAFT, 2ND	NPC-2554	3	1	1E05
1N1291-24040	PLUG M14, DRAIN	NPC-2554	1	6	1E03	I	1N1296-25020	GEAR 41	NPC-2554	3	3	1E05
1N1291-24070	PLUG, HOLED OIL	NPC-2554	1	5	1E03	I	1N1296-25030	GEAR 30	NPC-2554	3	4	1E05
1N1291-24230	PLUG PT1/4	NPC-2554	1	6-	1E03	I	1N1296-25040	MOUNT, BRAKE	NPC-2554	6	1	1E08
1N1291-25010	GEAR 16-27	NPC-2554	2	2	1E04	I	1N1296-25050	SHIFTER, SIDE CLUTCH	NPC-2554	7	1	1E09
1N1291-25040	GEAR 16	NPC-2554	3	5	1E05	I	1N1296-25060	PIN, SHIFT LEVER UPPR	NPC-2554	7	2	1E09
1N1291-25050	COLLAR 20.5X26X11	NPC-2554	3	7	1E05	I	1N1296-25070	PIN, SHIFT LEVER LOWR	NPC-2554	7	3	1E09
1N1291-25060	COLLAR 20.2X27.2X33	NPC-2554	3	8	1E05	I	1N1313-93030	NAMER, SIDE	NPC-2947	12	4	1D04
1N1291-25070	SHAFT COMP., 3RD	NPC-2554	4	1	1E06	I				15	9	1D06
1N1291-25080	BUSH 1715	NPC-2554	4	6	1E06	I	1N1360-22090	SCREW 8X94, ADJUST	NPC-2947	7	11	1C12
1N1291-25090	AXLE	NPC-2554	5	1	1E07	I				14	9	1C16
1N1291-25100	GEAR 44	NPC-2554	5	2	1E07	I	1N1361-36000	ROLLER, LOWER TRANK	NPC-2947	5	3	1C09
1N1291-25110	GEAR 28, CLUTCH	NPC-2554	5	3	1E07	I	1N1362-93060	LABEL, PQ-1	NPC-2947	12	5	1D04
1N1291-25120	PLATE, BALL SUPPORT'G	NPC-2554	5	5	1E07	I	1N1362-93070	LABEL, PQ-2	NPC-2947	12	6	1D04
1N1291-25134	GEAR 28, SIDE CLUTCH	NPC-2554	5	6	1E07	I				15	4	1D06
1N1291-25140	BOSS, DRIVE	NPC-2554	5	8	1E07	I	1N1362-93100	LABEL, PQ-5	NPC-2947	12	7	1D04
1N1291-25150	BALL 4, STEEL	NPC-2554	5	9	1E07	I				15	5	1D06
1N1291-25160	LINER 2.0X25.5X46	NPC-2554	5	10	1E07	I	1N1362-93140	LABEL, PQ-9	NPC-2947	12	8	1D04
1N1291-25170	LINER 2.0X35.5X50	NPC-2554	5	11	1E07	I				15	6	1D06
1N1291-25180	SPRING, CLUTCH	NPC-2554	5	12	1E07	I	1N1362-93250	LABEL, PQ-20	NPC-2947	12	9	1D04
1N1291-25190	COLLAR 25.2X31.8X27.	NPC-2554	5	13	1E07	I	1N1366-53000	SPRING 12.5X34.5, TNS	NPC-2947	9	6	1C14
1N1291-25200	COVER, OIL SEAL	NPC-2554	5	16	1E07	I	1N1430-22070	ROLLER, TENSION	NPC-2947	1	5	1C03

PART NO.	DESCRIPTION	CATALOG NO.	GRP. NO.	REF. NO.	LOC. NO.	I	PART NO.	DESCRIPTION	CATALOG NO.	GRP. NO.	REF. NO.	LOC. NO.
1N1430-24000	PLUG, BLIND	NPC-2554	1	15	1E03	I	1N3501-54001	STEP	NPC-2947	3	8-	1 1C06
1N1430-24080	CAP, SEAL	NPC-2554	1	7	1E03	I	1N3501-54002	STEP	NPC-2947	3	8-	2 1C06
1N1430-25090	COLLAR	NPC-2554	2	5	1E04	I	1N3501-54030	STEP L	NPC-2947	3	16	1C06
			3	9	1E05	I	1N3501-54040	STEP R	NPC-2947	3	17	1C06
			4	5	1E06	I	1N3501-54041	STEP R	NPC-2947	3	17-	1 1C06
1N1430-26030	WASHER, SEAL	NPC-2554	8	6	1E10	I	1N3501-58000	PANEL, CONTROL	NPC-2947	6	4	1C11
1N1480-42170	ROD	NPC-2947	7	13	1C12	I	1N3501-58041	COVER A, UNDER	NPC-2947	3	7	1C06
1N1520-53020	PLUG 25J, SQUARE OIL	NPC-2947	11	22	1D02	I	1N3501-58070	STAY, HANDLE A	NPC-2947	6	10	1C11
1N1550-54100	PIPE (C)	NPC-2947	3	9	1C06	I	1N3501-58090	GUARD, UNDER	NPC-2947	3	4	1C06
1N1723-31360	LEVER, DEADMAN	NPC-2947	14	1	1C16	I	1N3501-58120	COVER, PULLEY	NPC-2947	3	13	1C06
1N3500-24000	CASE L, TRANSMISSION	NPC-2554	1	1	1E03	I	1N3501-58200	PANEL A, CONTROL	NPC-2947	6	17	1C11
1N3500-24010	CASE R, TRANSMISSION	NPC-2554	1	2	1E03	I	1N3501-64000	CARRIER, PLATFORM	NPC-2947	11	1	1D02
1N3500-24011	CASE R, TRANSMISSION	NPC-2554	1	2-	1E03	I	1N3501-64010	LEVER, DUNP	NPC-2947	11	15	1D02
1N3500-24030	BRACKET, OUTER	NPC-2554	1	19	1E03	I	1N3501-64020	PIN, FULCRUM	NPC-2947	11	6	1D02
1N3500-41000	JOINT 12X14, UNIVERSL	NPC-2947	9	7	1C14	I	1N3501-66000	PLATE, BACK	NPC-2947	11	8	1D02
1N3500-41010	LEVER A, CHANGE	NPC-2947	9	1	1C14	I	1N3501-66020	PLATE, BACK	NPC-2947	11	9	1D02
1N3500-42130	RODE A, BRAKE	NPC-2947	8	12	1C13	I	1N3501-93000	NAMER MCG91, MAIN	NPC-2947	12	3	1D04
1N3500-44000	GRIP, RED	NPC-2947	7	5	1C12	I				15	10	1D06
1N3500-51000	WIRE L, SIDE CLUTCH	NPC-2947	10	4	1C15	I	1N3506-42160	SCREW M8X60, ADJUST	NPC-2947	14	9-	1 1C16
1N3500-51030	BAND 25.4	NPC-2947	10	2	1C15	I	1N3507-93050	DECAL, HYD. CONTROL	NPC-2947	15	2	1D06
1N3500-54090	BOLT, STAY	NPC-2947	3	12	1C06	I	1N3507-93060	DECAL, HYD. CONTROL	NPC-2947	15	3	1D06
1N3500-58130	PROTECTOR	NPC-2947	3	3	1C06	I	1N3507-93090	DECAL, HYD. CONTROL	NPC-2947	15	7	1D06
1N3500-64110	LEVER, LOCK	NPC-2947	11	19	1D02	I	1N3510-35010	SHAFT M12X166	NPC-2947	5	4	1C09
1N3500-65001	PLATE L, SIDE	NPC-2947	11	2	1D02	I	106990-44660	BAND, HOSE	NPC-2632	6	20	1B08
1N3500-65002	PLATE L, SIDE	NPC-2947	11	2-	1D02	I	114250-21290	KEY 4X 7	NPC-2632	5	8	1B07
1N3500-65011	BOARD R, SIDE	NPC-2947	11	3	1D02	I	114270-01600	PARALLEL PIN 8X12	NPC-2632	1	4-	1 1B03
1N3500-65012	SIDE PLATE R	NPC-2947	11	3-	1D02	I	114770-61600	SEAL, OIL	NPC-2632	8	31	1B10
1N3500-93040	LABEL, CHANGE	NPC-2947	12	2	1D04	I	124060-77680	CLAMP 10	NPC-2632	6	23	1B08
			15	8	1D06	I	160110-92610	BAG, TOOL	NPC-2632	3	9	1B05
1N3501-21000	PULLEY, ENGINE	NPC-2947	2	1	1C04	I	160110-92710	BAR	NPC-2632	3	11	1B05
1N3501-21010	PULLEY, TRANSMISSION	NPC-2947	2	3	1C04	I	160120-76940	WASHER	NPC-2632	8	9	1B10
1N3501-22000	ARM A, TENSION	NPC-2947	1	1	1C03	I					21	1B10
1N3501-31000	FRAME, BODY	NPC-2947	3	1	1C06	I	160120-92700	SPANNER, BOX	NPC-2632	3	10	1B05
1N3501-35000	RING, FLOAT	NPC-2947	4	3-	1C08	I	160341-01950	PIPE	NPC-2632	9	42	1B12
1N3501-35020	SHAFT	NPC-2947	4	4-	1C08	I	160393-55050	GASKET, TANK CAP	NPC-2632	6	10	1B08
			5	4-	1C09	I	160490-01330	GASKET	NPC-2632	1	9	1B03
1N3501-35030	U-BOLT	NPC-2947	5	15-	1C09	I	160490-11010	HEAD ASSY, CYLINDER	NPC-2632	2	3	1B04
1N3501-36010	ROLLER, LOWER TRACK	NPC-2947	5	3-	1C09	I	160490-11120	SPRING, VALVE	NPC-2632	2	9	1B04
1N3501-37000	CRAWLER 180X60X34, RB	NPC-2947	4	12	1C08	I	160490-11290	GUIDE PLATE	NPC-2632	2	15	1B04
1N3501-37010	CRAWLER 180X60X34, RB	NPC-2947	4	12-	1C08	I	160490-11300	BONNET	NPC-2632	2	16	1B04
1N3501-41000	GUIDE A, CHANGE	NPC-2947	9	3	1C14	I	160490-11310	GASKET, BONNET	NPC-2632	2	17	1B04
1N3501-42000	LINK, CLUTCH BRAKE	NPC-2947	7	2	1C12	I	160490-12500	CLEANER ASSY, AIR	NPC-2632	4	2	1B06
1N3501-42020	LEVER, CLUTCH BRAKE	NPC-2947	7	1	1C12	I	160490-12520	BODY, AIR CLEANER	NPC-2632	4	3	1B06
1N3501-42030	LINK, BRAKE	NPC-2947	8	9	1C13	I	160490-14050	CAMSHAFT ASSY	NPC-2632	5	1	1B07
1N3501-42090	LINK, CLUTCH BRAKE (A	NPC-2947	7	15	1C12	I	160490-14200	TAPPET	NPC-2632	5	10	1B07
1N3501-42091	LINK A, CLUTCH BRAKE	NPC-2947	7	15-	1C12	I	160490-14400	ROD, PUSH	NPC-2632	5	11	1B07
1N3501-42100	BRACKET A, DEADMN. LVR	NPC-2947	14	2	1C16	I	160490-22010	PISTON ASSY	NPC-2632	5	18	1B07
1N3501-47000	HANDLE A	NPC-2947	6	1	1C11	I	160490-22300	PIN, PISTON	NPC-2632	5	24	1B07
1N3501-47000-1	HANDLE A	NPC-2947	6	1-	1C11	I	160490-23030	ROD ASSY, CONNECTING	NPC-2632	5	26	1B07
1N3501-47030	STAY	NPC-2947	6	11	1C11	I	160490-45110	CASE, FAN (RED) (50)	NPC-2632	9	28	1B11
1N3501-47100	HANDLE 1	NPC-2947	6	16	1C11	I	160490-45200	COVER	NPC-2632	9	29	1B12
1N3501-51000	WIRE, CONTROL	NPC-2947	8	4	1C13	I	160490-45211	COVER, REAR	NPC-2632	9	30	1B12
1N3501-52000	WIRE, LEAD	NPC-2947	6	9-	1C11	I	160490-45220	HEAD, CYLINDER	NPC-2632	9	31	1B12
1N3501-54000	STEP	NPC-2947	3	8	1C06	I	160490-56010	CARBURETOR ASSY	NPC-2632	7	1	1B09



PART NO.	DESCRIPTION	CATALOG NO.	GRP. NO.	REF. NO.	LOC. NO.	I	PART NO.	DESCRIPTION	CATALOG NO.	GRP. NO.	REF. NO.	LOC. NO.
160490-56011	CARBURETOR ASSY	NPC-2632	7	1-	1	1B09	160510-14550	WASHER	NPC-2632	5	29	1B07
160490-56590	BODY, FLOAT	NPC-2632	7	10		1B09	160510-56610	GASKET	NPC-2632	7	14	1B09
160490-56600	BOLT	NPC-2632	7	11		1B09	160510-56620	FLOAT ASSY	NPC-2632	7	16	1B09
160490-59360	HOSE, FUEL (B-145)	NPC-2632	6	22		1B08	160520-03050	BREATHER. MT.	NPC-2632	2	19	1B04
160490-66010	SPRING	NPC-2632	8	11		1B10	160520-07271	LABEL, DRAIN	NPC-2632	3	5	1B05
160490-66020	SPRING	NPC-2632	8	11-	1	1B10	160520-07272	LABEL, DRAIN	NPC-2632	3	5-	1B05
160490-66190	LEVER, GOVERNOR	NPC-2632	8	24		1B10	160520-66291	SPRING	NPC-2632	8	19	1B10
160490-66200	LINK, THROTTLE	NPC-2632	8	28		1B10	160525-45010	FAN	NPC-2632	9	27	1B11
160490-66211	SPRING	NPC-2632	8	29		1B10	160530-21200	GEAR, CRANKSHAFT	NPC-2632	5	14	1B07
160490-76050	STARTER ASSY, RECOIL	NPC-2632	9	1		1B11	160590-21210	GEAR, IDLE	NPC-2632	5	15	1B07
160490-76051	STARTER ASSY, RECOIL	NPC-2632	9	1-	1	1B11	160593-55300	COCK ASSY, FUEL	NPC-2632	6	13	1B08
160490-76250	STARTER ASSY, RECOIL	NPC-2632	9	2		1B11	160610-03050	BREATHER ASSY	NPC-2632	2	20	1B04
160490-76251	RE-COIL STARTER	NPC-2632	9	2-	1	1B11	160610-04201	BOLT M 8X 53	NPC-2632	1	21	1B03
160490-76510	REEL	NPC-2632	9	4		1B11	160610-04570	BOLT M 6X 70	NPC-2632	2	1	1B04
160490-76511	REEL	NPC-2632	9	4-	1	1B11	160610-04620	BOLT M6X 16	NPC-2632	2	2	1B04
160490-76580	ROPE, STARTER	NPC-2632	9	15		1B11	160610-12530	CAP, AIR CLEANER	NPC-2632	4	4	1B06
160490-76590	PULLFY, STARTER	NPC-2632	9	17		1B11	160610-12540	ELEMENT, AIR CLEANER	NPC-2632	4	5	1B06
160490-76591	PULLEY, STARTER	NPC-2632	9	17-	1	1B11	160610-12550	HOLDER, ELEMENT	NPC-2632	4	6	1B06
160490-76600	KNOB, STARTER	NPC-2632	9	16		1B11	160610-21290	KEY 4X 10	NPC-2632	5	16	1B07
160490-76610	CASE, STARTER	NPC-2632	9	3		1B11	160610-23201	BOLT, ROD	NPC-2632	5	27	1B07
160490-76611	CASE ASSY, STARTER	NPC-2632	9	3-	1	1B11	160610-55100	STRAINER	NPC-2632	6	11	1B08
160490-78050	FLYWHEEL MAGNETO	NPC-2632	9	21		1B11	160610-55390	CUP, COCK	NPC-2632	6	18	1B08
160490-78500	ROTOR	NPC-2632	9	22		1B11	160610-56630	PIN, FLOAT	NPC-2632	7	18	1B09
160490-78510	COIL, IGNITION	NPC-2632	9	23		1B11	160610-56900	SCREW	NPC-2632	7	25	1B09
160491-56010	CARBURETOR COMPL.	NPC-2632	7	1-	2	1B09	160611-01740	CAP ASSY	NPC-2632	1	18	1B03
160491-59350	PIPE, FUEL	NPC-2632	6	21		1B08	160611-14560	SPRING	NPC-2632	5	7	1B07
160492-56520	VALVE, THROTTLE	NPC-2632	7	3		1B09	160611-77250	SWITCH, STOP	NPC-2632	9	39	1B12
160492-56530	VALVE	NPC-2632	7	4		1B09	160662-07370	LABEL, AIR CLEANER	NPC-2632	3	7	1B05
160492-56540	JET, PILOT	NPC-2632	7	5		1B09	160664-07360	LABEL, AIR CLEANER	NPC-2632	3	6	1B05
160492-56550	NEEDLE	NPC-2632	7	6		1B09	160664-07370	LABEL, AIR CLEANER	NPC-2632	3	8	1B05
160492-56570	SHAFT ASSY, THROTTLE	NPC-2632	7	8		1B09	160664-11100	INLET VALVE	NPC-2632	2	7	1B04
160492-56580	NOZZLE, MAIN	NPC-2632	7	9		1B09	160664-11110	EXHAUST VALVE	NPC-2632	2	8	1B04
160492-56581	NOZZLE, MAIN	NPC-2632	7	9-	1	1B09	160664-11180	RETAINER, VALVE	NPC-2632	2	10	1B04
160492-56591	BODY, FLOAT	NPC-2632	7	10-	1	1B09	160664-66220	SPRING, RETURN	NPC-2632	8	18	1B10
160492-56600	BOLT M5	NPC-2632	7	11-	1	1B09	160667-56150	GASKET, CARBURETOR	NPC-2632	7	26	1B09
160492-56610	SHAFT, CHOKE	NPC-2632	7	13		1B09	160667-56160	SPACER, CARBURETOR	NPC-2632	7	27	1B09
160492-56620	GASKET	NPC-2632	7	15		1B09	160667-56750	SCREW, ADJUSTING	NPC-2632	7	23	1B09
160492-56630	SEAL	NPC-2632	7	17		1B09	160670-66350	COLLAR	NPC-2632	8	20	1B10
160493-13500	MUFFLER	NPC-2632	4	10		1B06	160690-11200	ARM, ROCKER	NPC-2632	2	11	1B04
160493-13501	MUFFLER	NPC-2632	4	10-	1	1B06	160690-11220	PIVOT, ROCKER ARM	NPC-2632	2	12	1B04
				10-	2	1B06	160690-11270	BOLT	NPC-2632	2	13	1B04
160493-13530	COVER, MUFFLER	NPC-2632	4	11		1B06	160690-11271	BOLT	NPC-2632	2	13-	1B04
160493-13550	MUFFLER	NPC-2632	4	9		1B06	160690-11280	NUT M6X 0.5	NPC-2632	2	14	1B04
160493-13551	MUFFLER ASSY	NPC-2632	4	9-	1	1B06	160690-61300	SPINDLE, GOVERNOR	NPC-2632	8	2	1B10
160493-13780	COVER, ELBOW	NPC-2632	4	12		1B06	160690-61310	SHAFT, GOV. LEVER	NPC-2632	8	3	1B10
160493-66051	LEVER ASSY, CONTROL	NPC-2632	8	13		1B10	160690-61450	WASHER	NPC-2632	8	4	1B10
160493-66110	CONTROL ASSY	NPC-2632	8	12		1B10	160690-61600	GEAR ASSY, GOV.	NPC-2632	8	5	1B10
160495-56560	JET, MAIN	NPC-2632	7	7		1B09	160690-76531	GUIDE, RATCHET	NPC-2632	9	8-	1B11
160495-56561	JET, MAIN	NPC-2632	7	7-	1	1B09	160690-76540	SPRING, SPIRAL	NPC-2632	9	9-	1B11
160495-56600	GASKET	NPC-2632	7	12		1B09	160690-76561	SPRING, FRICTION	NPC-2632	9	10-	1B11
160510-02220	SEAL, OIL	NPC-2632	1	7		1B03	160690-76570	SPRING, RETURN	NPC-2632	9	16A	1B11
				15		1B03	160690-76580	PLATE, FRICTION	NPC-2632	9	7-	1B11
160510-03180	PIPE, BREATHER	NPC-2632	2	21		1B04	160690-76801	RATCHET	NPC-2632	9	5-	1B11
160510-13200	GASKET, MUFFLER	NPC-2632	4	8		1B06	160690-78010	PLUG, SPARK	NPC-2632	9	19	1B11

PART NO.	DESCRIPTION	CATALOG NO.	GRP. NO.	REF. NO.	LOC. NO.	PART NO.	DESCRIPTION	CATALOG NO.	GRP. NO.	REF. NO.	LOC. NO.
160690-78020	PLUG, SPARK	NPC-2632	9	19-	1B11	22242-000150	CIRCLIP 15	NPC-2947	1	3	1C03
160692-56620	O-RING	NPC-2632	7	25A	1B09				4	6-	1C08
160692-56710	SCREW	NPC-2632	7	20	1B09	22242-000160	CIRCLIP 16	NPC-2947	1	6	1C03
160692-56760	BODY, COCK	NPC-2632	7	25B	1B09				8	10	1C13
160692-56770	HOSE	NPC-2632	7	24	1B09	22242-000170	CIRCLIP 17	NPC-2554	4	4	1E06
160692-76530	PIN, RATCHET	NPC-2632	9	6	1B11			NPC-2947	4	6	1C08
160692-76540	GUIDE, RATCHET	NPC-2632	9	8	1B11				5	6-	1C09
160692-76550	SPRING, FRICTION	NPC-2632	9	10	1B11	22242-000200	CIRCLIP 20	NPC-2947	5	6	1C09
160692-76560	WASHER, THRUST	NPC-2632	9	11	1B11	22242-000250	CIRCLIP 25S	NPC-2554	5	7	1E07
160692-76580	SPRING, SPIRAL	NPC-2632	9	9	1B11			NPC-2947	7	6	1C12
160692-76800	RATCHET	NPC-2632	9	5	1B11	22242-000500	CIRCLIP 50	NPC-2554	5	4	1E07
160692-76810	PLATE, FRICTION	NPC-2632	9	7	1B11	22252-000120	CIRCLIP 12	NPC-2632	5	25	1B07
160692-76820	SHAFT	NPC-2632	9	12	1B11	22252-000350	CIRCLIP 35	NPC-2947	1	2	1C03
160700-78040	CAP, PLUG	NPC-2632	9	20	1B11	22252-000470	CIRCLIP 47	NPC-2554	5	17	1E07
160700-78050	TERMINAL, PLUG	NPC-2632	9	24	1B11	22312-080120	PARALLEL PIN 8X12	NPC-2632	1	4	1B03
160700-78720	GROMMET	NPC-2632	9	25	1B11	22351-030030	SPRING PIN 3X30	NPC-2947	9	9-	1C14
160708-07260	MARK, CAUTION	NPC-2632	3	4	1B05	22351-050025	SPRING PIN 5X25	NPC-2554	7	4	1E09
160710-55061	CAP ASSY, FUEL TANK	NPC-2632	6	3	1B08	22351-050030	SPRING PIN 5X30	NPC-2947	9	8	1C14
160710-55360	RING	NPC-2632	6	15	1B08	22360-080000	SNAP PIN 8	NPC-2947	7	9	1C12
160710-55370	GASKET	NPC-2632	6	16	1B08				8	3	1C13
160710-55382	FILTER	NPC-2632	6	17	1B08					7	1C13
160710-56710	SCREW	NPC-2632	7	21	1B09				14	10	1C16
160710-78700	CLAMP, CORD	NPC-2632	9	43	1B12	22360-160000	SNAP PIN 16	NPC-2947	7	3	1C12
				43-	1B12	22372-080000	SNAP PIN (JASO 8)	NPC-2632	8	10	1B10
160762-12050	GASKET, IN. MANIFOLD	NPC-2632	4	1	1B06	22417-200160	COTTER PIN 2.0X16	NPC-2947	8	8	1C13
				1-	1B06				10	10	1C15
160769-56720	CLAMP	NPC-2632	7	22	1B09	22417-250250	COTTER PIN 2.5X25	NPC-2947	5	14	1C09
160798-07100	LABEL, FINGER START	NPC-2632	3	2	1B05	22417-400300	COTTER PIN 4.0X30	NPC-2947	11	7	1B02
160802-56480	GASKET	NPC-2632	7	12-	1B09	22550-050251	KEY 5X25	NPC-2947	2	11	1C04
160810-21290	KEY 4X24	NPC-2632	5	30	1B07	24101-060024	BALL BEARING	NPC-2947	4	5-	1C08
181130-56640	SPRING	NPC-2632	7	19	1B09				5	5-	1C09
181230-56380	SPRING	NPC-2632	7	2	1B09	24101-060034	BALL BEARING	NPC-2554	2	4	1E04
183210-55150	GAUGE, FUEL	NPC-2632	6	12	1B08			NPC-2947	4	5	1C08
22137-060000	WASHER 6, POLISHED	NPC-2947	8	6	1C13	24101-060044	BALL BEARING 6004	NPC-2947	5	5	1C09
				10	9	24101-060054	BALL BEARING	NPC-2554	5	14	1E07
				11	11	24101-062024	BALL BEARING	NPC-2554	2	6	1E04
22137-080000	WASHER 8, POLISHED	NPC-2554	1	9	1E03	24101-062030	BALL BEARING	NPC-2632	1	8	1B03
				7	7					14	1B03
		NPC-2947	2	7	1C04					16	1B03
				7	8	24101-062034	BALL BEARING	NPC-2554	3	6	1E05
				8	2	1C13			4	3	1E06
				14	4	24104-062024	BALL BEARING	NPC-2947	1	4	1C03
22137-100000	WASHER 10, POLISHED	NPC-2947	3	10	1C06	24311-000100	O-RING 1A P-10.0	NPC-2632	1	5	1B03
				10-	1C06					12	1B03
				10-	2C06	24311-000140	O-RING 1A P-14.0	NPC-2554	7	5	1E09
				5	13	1C09			8	10	1E10
				19	1C09	24311-000150	O-RING 1A P-15.0	NPC-2632	1	20	1B03
22137-120000	WASHER 12, POLISHED	NPC-2947	5	9	1C09	24421-153206	SEAL TC 153206, OIL	NPC-2947	4	7-	1C08
				11	18	1D02			5	7-	1C09
22217-060000	SPRING WASHER 6	NPC-2554	6	3	1E08	24421-173007	SEAL TC17 30 07, OIL	NPC-2554	2	3	1E04
22217-080000	SPRING WASHER 8	NPC-2554	1	14	1E03	24421-173507	SEAL TC17 35 07, OIL	NPC-2554	3	10	1E05
				7	8	24421-173508	SEAL TC17 35 08, OIL	NPC-2947	4	7	1C08
22217-120000	WASHER 12, SPRING	NPC-2554	1	18	1E03	24421-204208	SEAL TC20 42 08, OIL	NPC-2947	5	7	1C09
22242-000140	CIRCLIP 14	NPC-2554	6	5	1E08	24421-254708	SEAL TC25 47 08, OIL	NPC-2554	5	15	1E07

PART NO.	DESCRIPTION	CATALOG NO.	GRP. NO.	REF. NO.	LOC NO.	PART NO.	DESCRIPTION	CATALOG NO.	GRP. NO.	REF. NO.	LOC NO.	
25123-003201	V-BELT	NPC-2947	2	2	1C04	26367-060002	NUT M 6	NPC-2947	9	5	1C14	
26014-060259	BOLT 6X25 W/PL.&SP.W	NPC-2947	10	3	1C15	26367-080002	U-NUT M 8	NPC-2947	3	6	1C06	
				7	1C15					19	1C06	
26016-060124	BOLT 6X12 W/L.W.	NPC-2554	6	10	1E08				6	13	1C11	
26016-060164	BOLT 6X16 W/L.W.	NPC-2947	2	10	1C04				11	14	1D02	
26016-080254	BOLT M 8X 25	NPC-2554	1	13	1E03				14	8	1C16	
26018-080164	BOLT M 8X 16	NPC-2554	1	20	1E03	26367-100002	U-NUT M10	NPC-2947	6	3	1C11	
		NPC-2947	2	5	1C04	26376-120002	U-NUT M12	NPC-2632	5	17	1B07	
26018-080204	BOLT M 8X 20	NPC-2947	3	5	1C06	26476-060142	BOLT M 6X 14,TAPPING	NPC-2632	2	18	1B04	
				18	1C06				4	14-1	1B06	
				6	1C11					16	1B06	
				11	1D02				6	19	1B08	
				14	7	1C16			8	30	1B10	
26018-080254	BOLT M 8X 25	NPC-2947	11	16	1D02				9	33	1B12	
26018-100254	BOLT M10X 25	NPC-2947	6	2	1C11					34	1B12	
26051-060002	NUT M 6	NPC-2947	11	12	1D02					35	1B12	
26051-080002	NUT M 8	NPC-2947	2	8	1C04					36	1B12	
				6	8	1C11	26476-060162	BOLT M 6X 16	NPC-2632	9	38	1B12
26051-100002	NUT M10	NPC-2947	3	11	1C06	26476-060202	BOLT M 6X 20,TAPPING	NPC-2632	1	22	1B03	
				11-1	1C06	26476-060302	BOLT M 6X 30,TAPPING	NPC-2632	9	26	1B11	
				11-2	1C06	26557-060162	SCREW M 6X 16	NPC-2554	6	2	1E08	
				5	20	1C09			NPC-2947	11	10	1D02
26051-120002	NUT M12	NPC-2947	4	9	1C08	26647-100202	WING BOLT M10X20	NPC-2947	11	5	1D02	
				11	1C08					5-1	1D02	
				5	10	1C09	26647-100302	BOLT 10X30,WING	NPC-2947	11	23	1D02
26052-100002	NUT M10 W/SPRING	NPC-2947	5	16	1C09	26717-080002	NUT 8	NPC-2554	1	10	1E03	
26106-060082	BOLT M 6X 8 PLATED	NPC-2632	4	13	1B06				7	9	1E09	
				14	1B06	26717-100002	NUT M10	NPC-2554	8	5	1E10	
				9	18	1B11	26717-120002	NUT M12	NPC-2554	1	17	1E03
26106-060162	BOLT M 6X 16 PLATED	NPC-2632	5	28	1B07	26757-080002	LOCK NUT M 8 PLATED	NPC-2947	7	12	1C12	
26106-060252	BOLT M 6X 25 PLATED	NPC-2632	8	27	1B10				14	6	1C16	
26106-060302	BOLT M 6X 30 PLATED	NPC-2632	5	27-1	1B07					11	1C16	
26106-100162	BOLT M10X 16 PLATED	NPC-2632	1	6	1B03	26757-100002	LOCK NUT M10	NPC-2947	5	17	1C09	
				13	1B03	28110-100120	WRENCH 10X12	NPC-2632	3	12	1B05	
26116-080452	BOLT M 8X 45 PLATED	NPC-2947	2	6	1C04	29610-000650	CLAMP, SPEED 065	NPC-2632	9	44	1B12	
26116-080552	BOLT M 8X 55 PLATED	NPC-2947	14	3	1C16					44-1	1B12	
26117-040088	BOLT M 4X 8 PLATED	NPC-2632	8	17	1B10	29610-000950	CLAMP, SPEED 095	NPC-2632	9	37	1B12	
26117-040257	BOLT M 4X 25	NPC-2632	8	22	1B10	29610-001400	CLAMP	NPC-2632	9	41	1B12	
26117-080302	BOLT M 8X 30	NPC-2554	1	12	1E03	7N1292-35000	FLOAT RING ASSY.	NPC-2947	4	2	1C08	
26117-081102	BOLT M 8X110 PLATED	NPC-2554	1	8	1E03	7N1292-35010	FLOAT RING SET	NPC-2947	4	1	1C08	
26117-081202	BOLT M 8X120 PLATED	NPC-2554	1	11	1E03	7N3501-35000	FLOAT RING ASSY.	NPC-2947	4	2-1	1C08	
26117-100702	BOLT M10X 70 PLATED	NPC-2947	5	18	1C09	7N3501-35010	FLOAT RING SET	NPC-2947	4	1-1	1C08	
26117-101902	BOLT M10X190 PLATED	NPC-2947	3	12-1	1C06	7N3501-36000	LWR.TRANK ROLLER ASY	NPC-2947	5	2-1	1C09	
				12-2	1C06	7N3501-36010	LWR.TRANK ROLLER SET	NPC-2947	5	1-1	1C09	
26347-060002	U-NUT M 6	NPC-2632	8	23	1B10	7N3510-36000	LWR.TRANK ROLLER ASY	NPC-2947	5	2	1C09	
26347-080002	U-NUT M 8	NPC-2947	14	5	1C16	7N3510-36010	LWR.TRANK ROLLER SET	NPC-2947	5	1	1C09	
26347-120002	U-NUT M12	NPC-2947	11	20	1D02	760490-01500	COVER,CRANKCASE	NPC-2632	1	10	1B03	
26366-060002	NUT M 6	NPC-2632	4	7	1B06	760490-01560	BLOCK ASSY, CYLINDER	NPC-2632	1	1	1B03	
				15	1B06	760490-21700	CRANKSHAFT ASSY	NPC-2632	5	12	1B07	
				8	27-1	1B10	760490-22500	RING SET, PISTON	NPC-2632	5	20	1B07
26366-080002	NUT M 8	NPC-2632	9	40	1B12	760491-55700	TANK ASSY ,FUEL	NPC-2632	6	1	1B08	
26367-060002	NUT M 6	NPC-2632	9	13	1B11	760493-55700	TANK,FUEL (RED) (50)	NPC-2632	6	1-1	1B08	
		NPC-2947	3	15	1C06							
				6	6	1C11						



**YANMAR AGRICULTURAL EQUIPMENT CO.,LTD.**

**1-32, CHAYAMACHI, KITA-KU, OSAKA, 530, JAPAN**